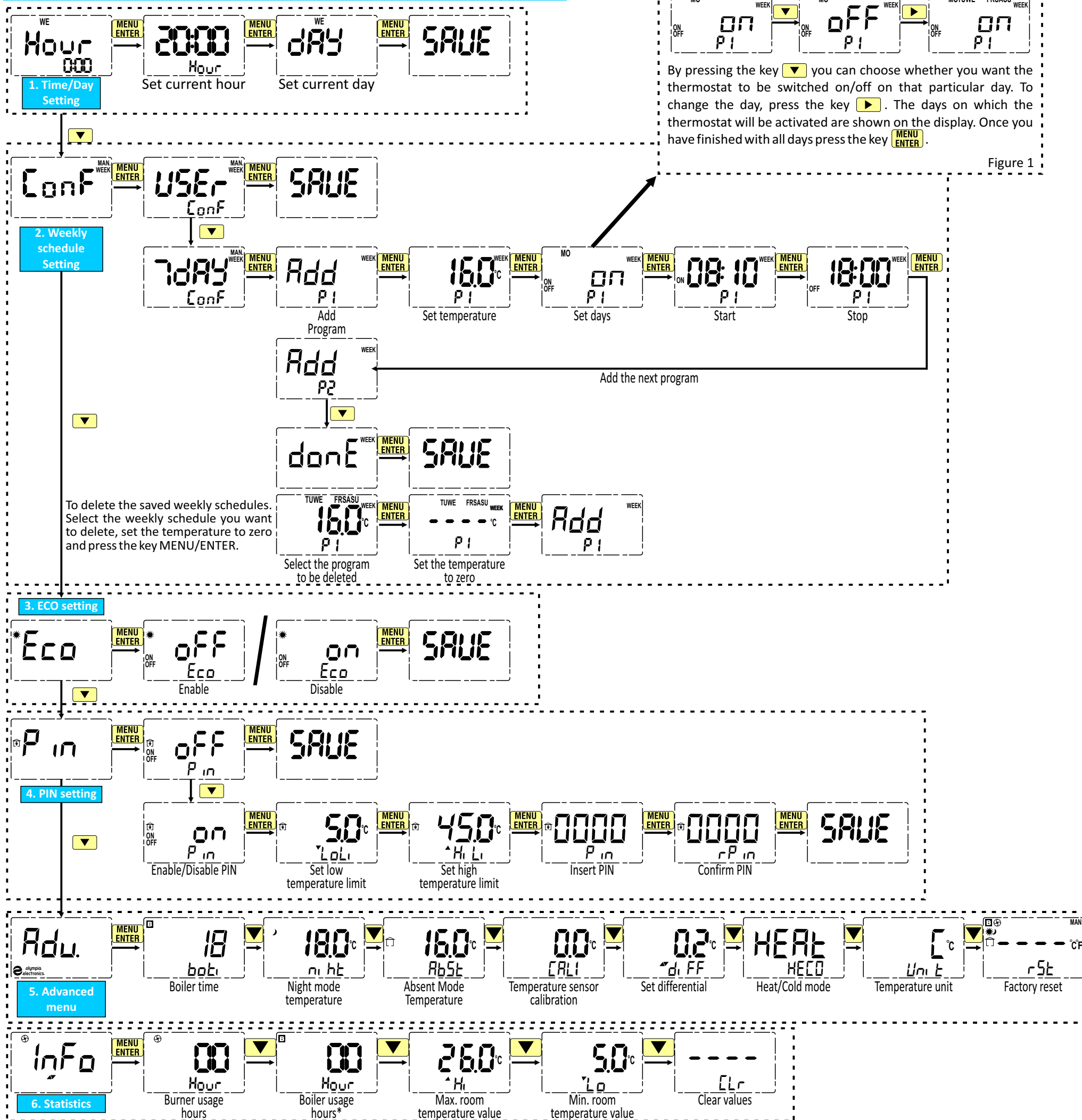


THERMOSTAT MENU



MENU INFORMATION

To enter the menu, press and hold the key **MENU/ENTER** for 1 sec.

Navigation/setting of the menu is done with the keys **▼** **▲** **►** **◄**

Entering the individual menus and saving the settings is done by pressing the key **MENU/ENTER**

To exit the menu press the key **ESC**

Hour
Set time and date.

Conf

In **USER** mode (factory setting) you manually set the temperature by pressing the keys **▼** **▲**

In **7day** mode you set the weekly schedules. To set the programs, follow the steps below:

- In screen **Add (P1)**, press the key **MENU/ENTER** to add the program.
- Set the temperature by pressing the keys **▼** **▲** and press **MENU/ENTER**
- Set the days according to figure 1.
- Set the starting hour by press the keys **▼** **▲** and press **MENU/ENTER**
- Set the stoping hour by press the keys **▼** **▲** and press **MENU/ENTER**

Next, you can add more programs or you can finish the setting by navigating to **doneE** screen.

Up to 20 programs can be set.

To delete the saved weekly schedules. Select the weekly schedule you want to delete, set the temperature to zero until the **---** is displayed and press the key **MENU/ENTER**

Eco

Enabling this mode, the backlight of the screen remains off to save battery power.

P in

Enabling the PIN, the temperature usage limits and the entry to the menu are locked. Enabling PIN does not restrict the use of the functions of the home screen. If the weekly schedule and PIN number are activated, it is not possible to set the usage limits, enable the night mode and enable the absent mode. In this case the PIN number only locks the menu entry. To disable the PIN, go to the menu PIN and select **OFF**. To change the PIN number you should disable the PIN number and set the PIN number from the start. In case you have forgotten the PIN number, a manual reset is possible.

Adv

Advanced menu configuration

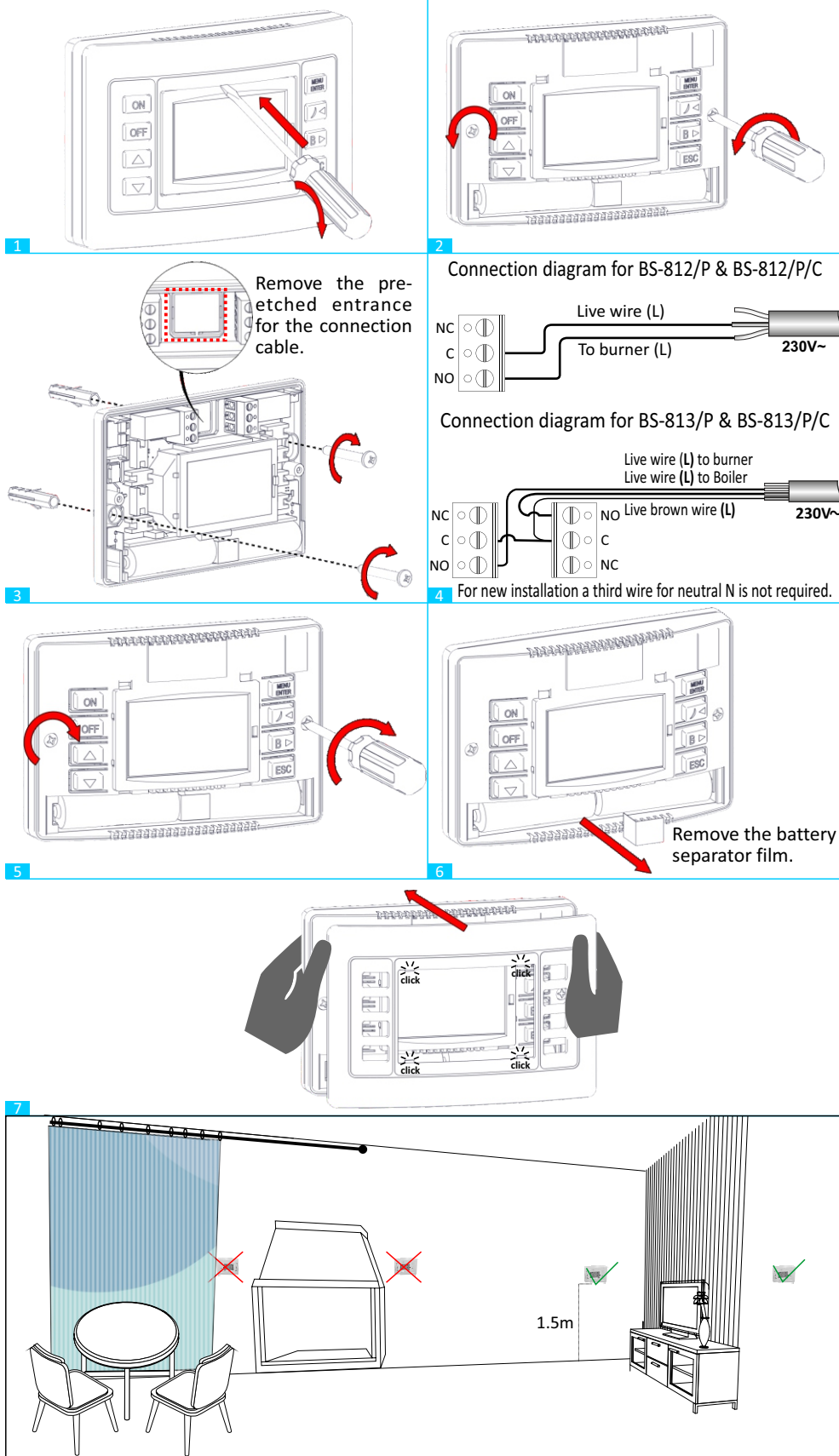
1. **bot**, Boiler operating time setting*. Set the boiler operating time from 1-240 minutes. If the boiler time is 00, disable the boiler by pressing the key **►**. Factory setting is **---**
2. **night**, Night mode temperature setting. Factory setting is 18.0°C.
3. **AbsE**, Absent mode temperature setting. Factory setting is 14.0°C.
4. **CALI**, Calibration of the temperature sensor. Factory setting is 0.0°C and can be configured from -3.0 to +3.0°C.
5. **d. FF**, Differential setting. This setting defines the "temperature window" between enabling/disabling of the burner output. Factory setting is 0.2°C and can be configured from 0.2 to 1.5°C.
6. **HECO**, Operation mode of the thermostat (heating/cooling). For the heating mode: **HEAT** (factory default) and cooling: **COLD**.
7. **Unit**, Temperature display/measuring unit (Celsius degrees °C or Fahrenheit degrees °F)
8. **rSt**, Factory defaults settings. To reset the device press the key **MENU/ENTER** twice.

Info

In this menu, the statistics recorded by the thermostat is displayed.

- Burner operating hours.
- Boiler operating hours.*
- Maximum room temperature value
- Minimum room temperature value
- To reset the statistics, go to the screen **CLR** and press the key **MENU/ENTER**

INSTALLATION INSTRUCTIONS



- Wall mounting with recommended height: 1.5m from the floor on an internal wall.
- Do not mount the devices in recesses, shelves, behind curtains or doors, or above or near heat sources.
- Avoid direct exposure to sunlight

WARNING HEALTH AND SAFETY INFORMATION

National safety regulations
Failure to comply with national safety regulations may result in personal injury, discomfort, property damage and other potential hazards.

- Comply with any national regulations and comply with appropriate safety regulations
- You shall comply with any additional national regulatory informations.

Risk of electric shock
Disconnect the power supply before any interference with the system

WARNING! installation, configuration, start-up and maintenance must be done by qualified personnel only.

INFORMATIONS

GENERAL

Removing the plastic separator film between the two batteries, the thermostat is activated. The current room temperature is shown in the centre of the display. Switch-on the thermostat pressing the key **ON**.
Firstly, set the current time and day, by navigating to the menu **Hour**. Then, set the temperature pressing the keys **▲** **▼**.
To enable the night mode press the key **☾** for 1 sec. The factory temperature setting is 18.0 °C and can be changed navigating to the menu **night**. This mode is disabled after 8 hours.
To enable the absent mode press the key **ESC** for 1 sec. The factory temperature setting is 14.0 °C and can be changed navigating to the menu **Ab5t**.
To enable the boiler (BS-813/P & BS-813/P/C) press the key **B** and the corresponding relay will command the boiler. The boiler will remain active as long as, it has been defined from the **boil** menu. In case, that the value is the factory default, then the boiler can be disabled only pressing the key **B**.
In case, the weekly schedule is enabled and change the temperature manually. The temperature remains the manual selection for 5 hours and after that the weekly schedule is been enabled again.

BATTERY REPLACEMENT

If the symbol **+** appeared on the display, then the batteries must be replaced.
Remove the front cover and replace the batteries with new one, same type and characteristics (2 alkaline batteries AA, 1.5V). Replace the front cover. Dispose the old batteries for recycling, in compliance with current enviromental protection regulations.

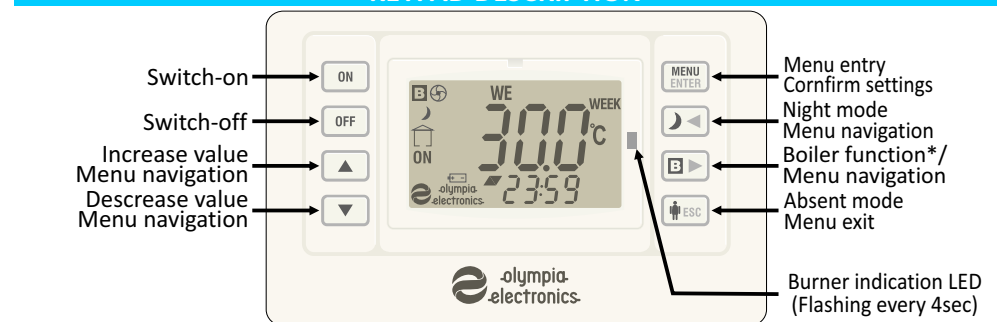
ANTI-FREEZE PROTECTION

If the room temperature value is 4.5°C, then the thermostat will enable the burner, regardless of the thermostat status. This mode remains active, as long as the temperature is below 4.5°C.

THERMOSTAT KEYPAD LOCK

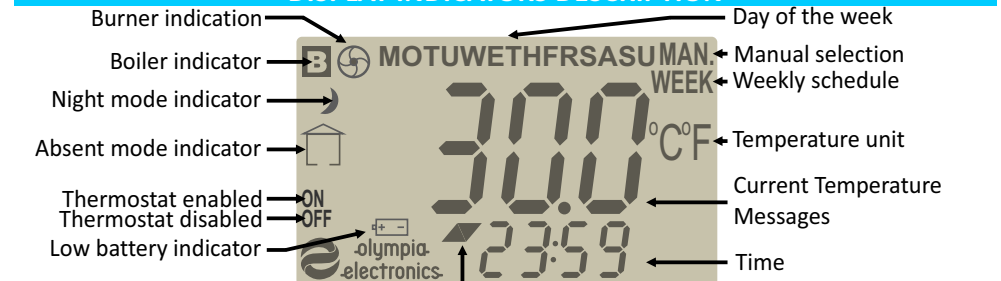
To lock the thermostat press simultaneously the keys **MENU ENTER** **▼** for 2 sec.
To unlock press the same keys again.

KEYPAD DESCRIPTION



*The key **▶** is like this **B** on BS-813/P & BS-813/P/C

DISPLAY INDICATORS DESCRIPTION



- ▼ The selection temperature is smaller than the current temperature
- ▲ The selection temperature and the differential is greater than the current temperature
- ▲▼ The selection temperature is between the selection temperature and the selection + the defferential

The device is considered an electronic device for disposal in accordance with the European Guidelines and may not be disposed of as domestic garbage.

- Dispose of the device through channels provided for this purpose.
- Comply with all local and currently applicable laws and regulations.
- Dispose of empty batteries in designated collection points.

*BS-813/P & BS-813/P/C model with boiler output



PROGRAMMABLE CHRONO - THERMOSTAT WITH COOLING AND HEATING FUNCTION

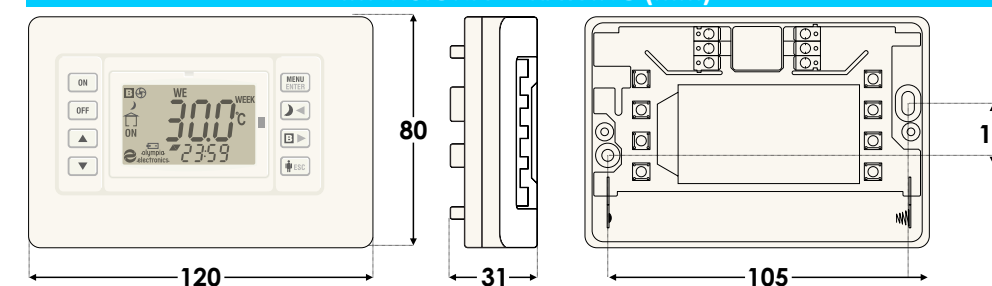


- Backlight screen
- 2 Alkaline batteries AA (LR06)
- Temperature setting 5.0 – 45.0°C with accuracy 0.1
- Temperature measurement 0.0 – 99.9°C with accuracy 0.1
- Anti-freeze protection to 4.5°C
- Keypad lock.
- Lock temperature usage limits with PIN number
- Boiler output*
- Temperature sensor calibration $\pm 3.0^\circ\text{C}$
- Adjustable differential 0.2 – 1.5°C
- Heating/Cooling function.
- Temperature Unit (°C, °F)
- Up to 20 weekly schedules
- ECO mode

TECHNICAL CHARACTERISTICS

PRODUCT CODE	BS-812/P BS-812/P/C	BS-813/P BS-813/P/C
BATTERIES	2 Alkaline AA (LR06)	
FREE RELAY CONTACT	5A - 250V AC	2 x 5A - 250V AC
DEGREES OF COVER PROTECTION	IP20	
PRODUCED IN ACCORDANCE WITH	EN 61000-6-1, EN 61000-6-3, EN 60730-1, EN 60730-2-9	
OPERATION TEMPERATURE RANGE	5 to 45 °C	
RELATIVE HUMIDITY	0 - 90% RH	
EXTERNAL DIMENSIONS	120 x 31 x 80mm	
CONSTRUCTION MATERIALS	ABS/PC, PC	
COLOR	WHITE or ANTHRACITE (/C)	
TYPICAL WEIGHT (including batteries)	180gr	190gr
WARRANTY	2 years	

DIMENSIONAL DRAWING (mm)



WARRANTY

Thank you for your trust in our products
Olympia Electronics - European manufacturer

Olympia Electronics guarantees the quality, condition and operation of the goods. The period of warranty is specified in the official catalogue of Olympia Electronics and also in the technical leaflet, which accompanies each product. This warranty ceases to exist if the buyer does not follow the technical instructions included in official documents given by Olympia Electronics or if the buyer modifies the goods provided or has any repairs or re-setting done by a third party, unless Olympia Electronics has fully agreed to them in writing. Products that have been damaged can be returned to the premises of our company for repair or replacement, as long as the warranty period is valid.

Olympia Electronics reserves the right to repair or to replace the returned goods and to or not charge the buyer depending on the reason of defection. Olympia Electronics reserves the right to charge or not the buyer the transportation cost.



72nd km. O.N.R. Thessaloniki-Katerini
P.C. 60300 P.O. Box 06 Eginio Pierias Greece
www.olympia-electronics.com
info@olympia-electronics.gr