



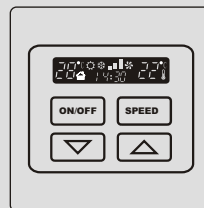
SPEEDKEY TECHNOLOGY CO.,LTD.  
[www.speed-key.com](http://www.speed-key.com)

- Please be careful to read the manual before using the product.
- Please preserve properly for future reference.

PRODUCT  
2 0 0 8

SK-AC2000

## Electric Room Thermostat



## USER MANUAL



SPEEDKEY TECHNOLOGY CO.,LTD



Dear User:  
Welcome to join the user group of SPEEDKEY!  
We sincerely hope that this new model can bring you joyful experiences.

## CONTENT

IMPORTANT NOTES	01
PACKAGE COMPONENTS	02 / 03
<i>Electric Room Thermostat (integral) SK-AC2000I</i> <i>Electric Room Thermostat (detachable) SK-AC2000SYS</i>	
INTRODUCTION	04
PRODUCT WIRING	05 / 09
<i>Electric Room Thermostat (integral SK-AC2000I) SR-Single valve circuit diagram</i> <i>Electric Room Thermostat (integral SK-AC2000I) NSR-Single valve circuit diagram</i> <i>Electric Room Thermostat (detachable SK-AC2000SYS) SR-Single valve circuit diagram</i> <i>Electric Room Thermostat (detachable SK-AC2000SYS) NSR-Single valve circuit diagram</i> <i>Electric Room Thermostat (detachable SK-AC2000SYS) SR-Double valve circuit diagram</i> <i>Electric Room Thermostat (detachable SK-AC2000SYS) NSR-Double valve circuit diagram</i>	
PRODUCT INSTALLATION	10 / 15
PRODUCT FUNCTION OPERATION	16 / 18
<i>Illustration of SK-AC2000 Series</i> <i>Introduction of SK-AC2000 Screen</i> <i>Description of SK-AC2000 Remote Control</i>	
PARAMETER SETTING	19 / 20
PROGRAMMING SETTING	21
PRODUCT SPECIFICATIONS	22
TROUBLE SHOOTING GUIDE	23

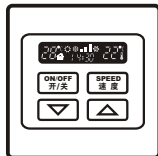
## SK-AC2000 Electric Room Thermostat

### ■ IMPORTANT NOTES

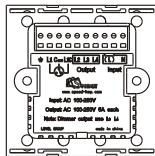
- This manual must be read before installation  
Please read carefully this manual before installation; fully understand the principle and function of this product.
- PRODUCT SAFETY  
All SPEEDKEY products have been designed and produced in accordance with CE and RoHS requirement, with various performance indexes complying with BS4662 requirements. Incorrect wiring may cause burning-out or malfunctions. Please refer to the wiring diagram for specific details. Please check whether the wiring diagrams contravene local access wiring rules.
- Electric Room Thermostat (integral)  
Electric Room Thermostat Touch Panel can be installed in BS4662 switch box. It is recommended that its internal installation dimension of base box is 65mm\*65mm\*50mm. Its external dimensions of the product is 86mm\*86mm\*46mm. The wiring terminal can be either screw type or non-screw type. The switch can be used safely only when connected to live line, neutral line and earthing line.
- Room Temperature Controller (detachable)  
Touch Panel can be installed in BS4662 switch box. It is recommended that its internal installation dimension of base box is 65mm\*65mm\*50mm. Its external dimensions of the touch panel is 86mm\*86mm\*18mm, which shall be connected to the host with 6-core cables.
- SK-AirC-Remote Infrared remote controller  
With infrared transmitter in this remote controller, its operating range is more than 15m in free space, its remote control angle is less than or equal to 90 degrees, and the infrared ray can be reflected indoors.
- PROPER POSITIONS FOR INSTALLATION  
1. The positions shall be convenient for easy installation and operation.  
2. The positions shall be away from water, moisture, direct sunlight and dust.
- TROUBLE SHOOTING GUIDE  
If the product can not work properly after the installation, please refer to TROUBLE SHOOTING GUIDE in this manual.  
Please use dry, soft cloth material for cleaning. Do not clean the switch with anti-solvents such as alcohol, acetone and ether etc.
- WARRANTY  
SPEEDKEY products come with two years, equipment-only warranty.

## ■ PACKAGE COMPONENTS

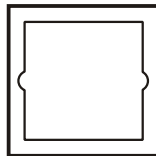
Electric Room Thermostat(integral)SK-AC2000I



Controller panel  
SK-AC2000I



Controller driving box



Thickening bracket



Manual



Controller of  
SK-AirC-Remote

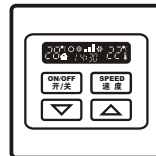


CR2025 button cell 2 fixing screws

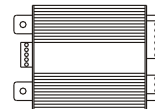


## ■ PACKAGE COMPONENTS

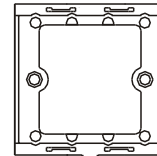
Electric Room Thermostat(detachable)SK-AC2000SYS



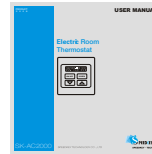
Controller panel  
SK-AC2000T



Host of the controller  
SK-AC2000M



Fixed bracket



Manual



Controller of  
SK-AirC-Remote



CR2025 button cell 2 fixing screws



## INTRODUCTION

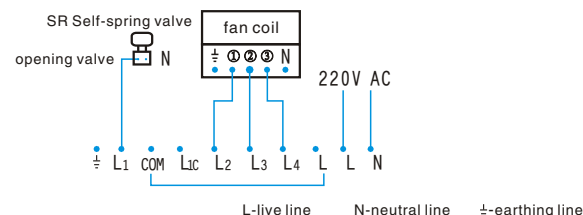
With SK-AC2000 Electric Room Thermostat, fan speed of central air conditioning fan coil and electric cool-hot valve switch can be adjusted to keep the room at a setting temperature.

SK-AC2000 intelligent Electric Room Thermostat is featured with unique design and easy operation.

- 1.SK-AC2000 Electric Room Thermostat is super-luxuriously designed, and made of ABS fire resistant, insulating and precious metal materials with a plurality of optional colors which meet the design requirement of decorating the house, office building and high class hotels.
- 2.There is backlight touch panel buttons. Its luminescent LCD screen can indicate indoor temperature, the digits stand for room temperature and user's setting temperature, setting temperature, wind speed and time. With multi-language indication and luminescent LCD screen, it is convenient to operate clearly in any environment, even it is dark.
- 3.Its intelligent circuit control has 3 steps of wind speed control, there are 3 optional modes which is cooling mode, heating mode and automatic mode can be set by infrared remote. SK-AC2000 Electric Room Thermostat can replace traditional mechanical air conditioning temperature controller and it can effectively save more than 30% energy.

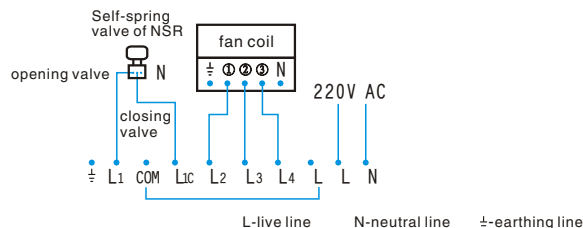
## PRODUCT WIRING

Electric Room Thermostat (integral SK-AC2000I) SR-Single valve circuit diagram (see figure)



Remark: SR's self-elastic spring valve can close automatically when the power is off.

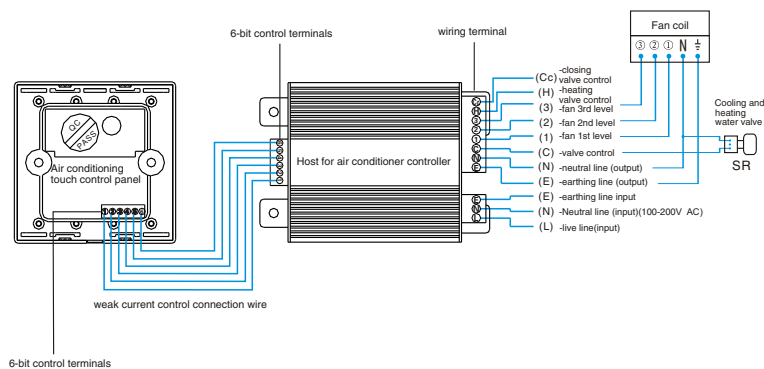
Electric Room Thermostat (Integral SK-AC2000I) NSR-Single valve circuit diagram (see figure)



Remark: NSR has no self-elastic spring valve; the valve has to be closed with electrical control.

## ■ PRODUCT WIRING

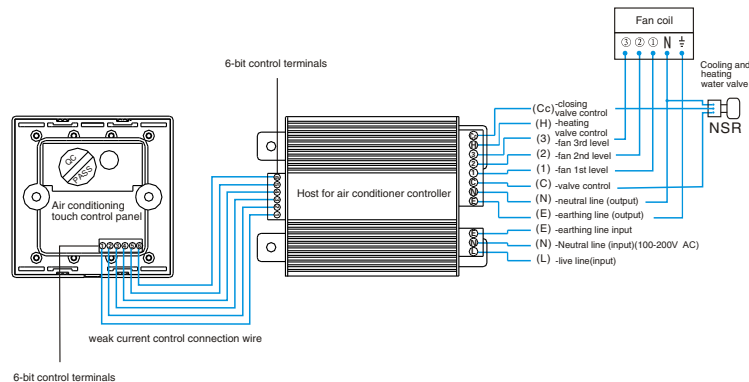
Electric Room Thermostat (detachable SK-AC2000SYS)SR-Single valve circuit diagram (see figure)



Remark: SR's self-elastic spring valve can close automatically when the power is off.

## ■ PRODUCT WIRING

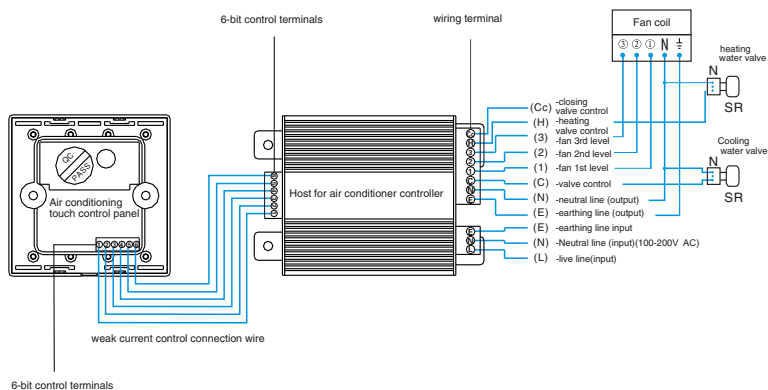
Electric Room Thermostat(detachable SK-AC2000SYS) NSR-Single valve circuit diagram (see figure)



Remark: NSR has no self-elastic spring valve; the valve has to be closed with electrical control.

## ■ PRODUCT WIRING

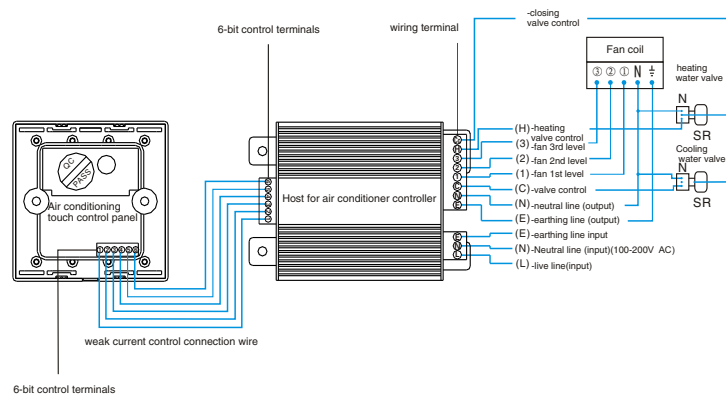
Electric Room Thermostat (detachable SK-AC2000SYS) SR-Double valve circuit diagram (see figure)



Remark: SR's self-elastic spring valve can close automatically when the power is off.

## ■ PRODUCT WIRING

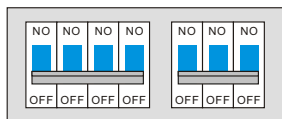
Electric Room Thermostat (detachable SK-AC2000SYS) NSR-double valve circuit diagram (see figure)



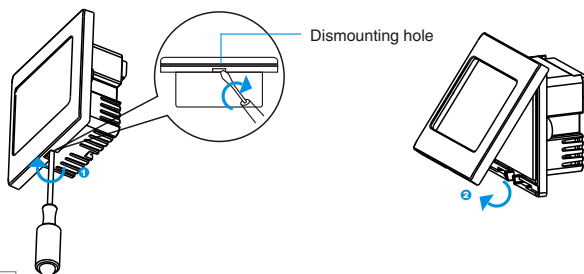
Remark: NSR has no self-elastic spring valve; the valve has to be closed with electrical control.

## ■ PRODUCT INSTALLATION (SK-AC2000I)

1 Turn off main power supply of the circuit

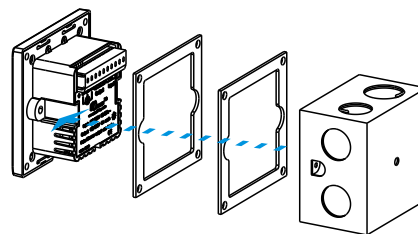


2 Open the switch base box of touch screen panel with the screwdriver

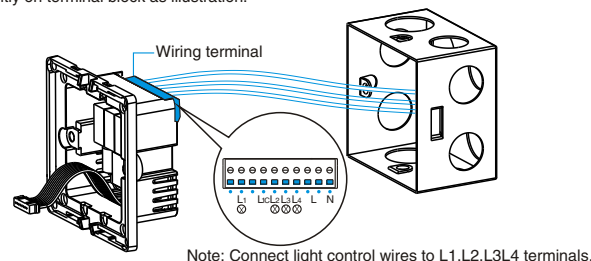


## ■ PRODUCT INSTALLATION (SK-AC2000I)

3 Check Bs4662 switch base box whether there is enough space (50mm) to install touch screen switch. If the space is not enough, the thickening bracket shall be used.



4 Draw out strong electric cable and network cable from Bs4662 switch base box and trim up, press tightly on terminal block as illustration.

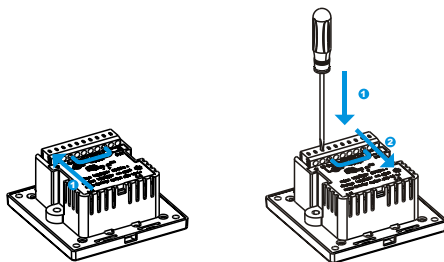


Note: Connect light control wires to L1, L2, L3, L4 terminals.

## ■ PRODUCT INSTALLATION (SK-AC2000I)

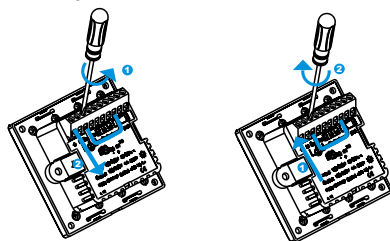
Connecting method of non-screw terminal

Please use single wire of diameter of 1.6 or 2.0 to comply with non-screw terminals suitable cable.



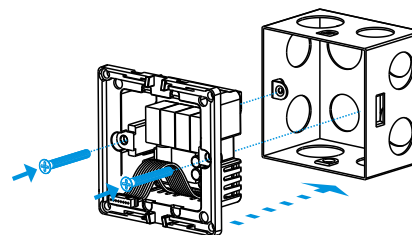
Connecting method of screw terminal

Please use single or multi copper wire of diameter less than 4mm<sup>2</sup> to comply with screw terminals suitable cable.

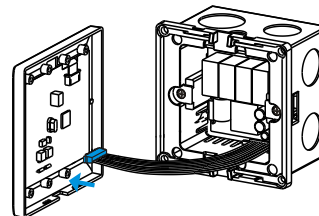


## ■ PRODUCT INSTALLATION (SK-AC2000I)

5 Mount the switch driving section into base box, and fix with 2 screws



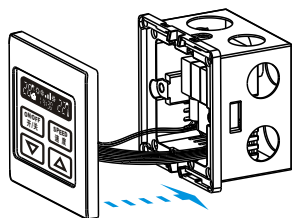
6 Insert the wiring terminal of switch driving section into the touch screen panel



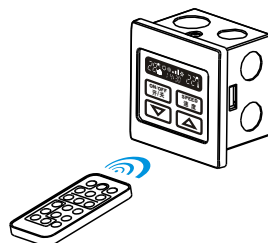


## ■ PRODUCT INSTALLATION (SK-AC2000I)

7 Cover the touch screen panel

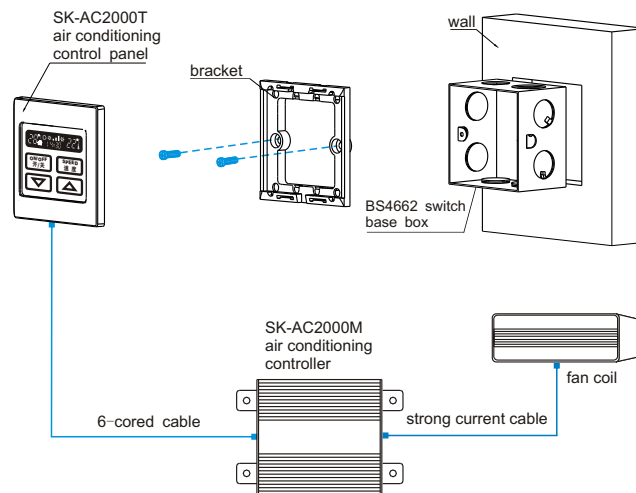


8 Set program setting as you like



## ■ PRODUCT INSTALLATION (SK-AC2000SYS)

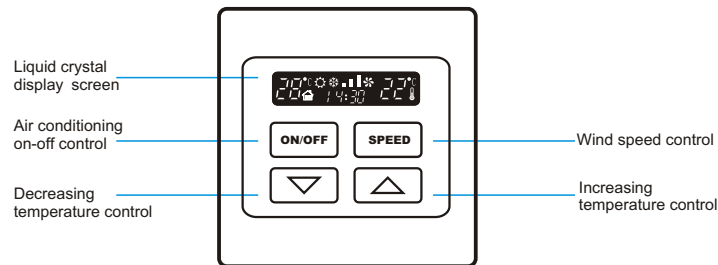
Illustration for installation of Electric Room Thermostat (detachable) SK-AC2000SYS



\* Fix the host controller beside the fan coil.

## ■ PRODUCT DESCRIPTION

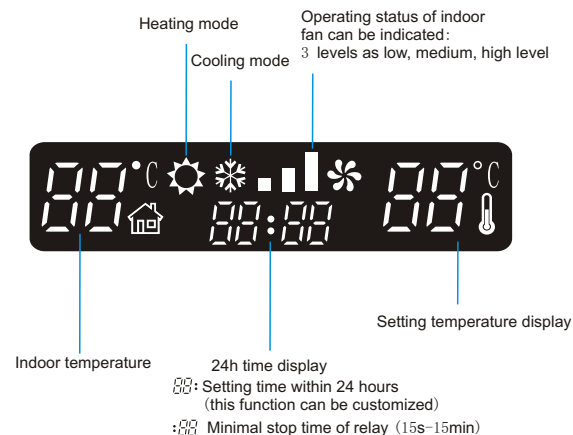
Illustration of SK-AC2000 series



- \*The design of blue luminescence touch screen is very modern and it is also convenient to be identified at night
- \*With the design of touch button backlight indication, it is easy to find its switch control, wind speed setting, and temperature regulation function button.
- \*With the design of 24h clock and time control, it can achieve the function of timing and advanced time setting.
- \*EEPROM can permanently keep parameters set by the user during power cut.
- \*Various valves (SR&NSR) can be controlled.
- \*It can save effectively more than 30% energy
- \*SK-AC2000 intelligent Electric Room Thermostat is suitable for installation in standard Bs4662 switch base box.

## ■ PRODUCT DESCRIPTION

Introduction of SK-AC2000 display screen

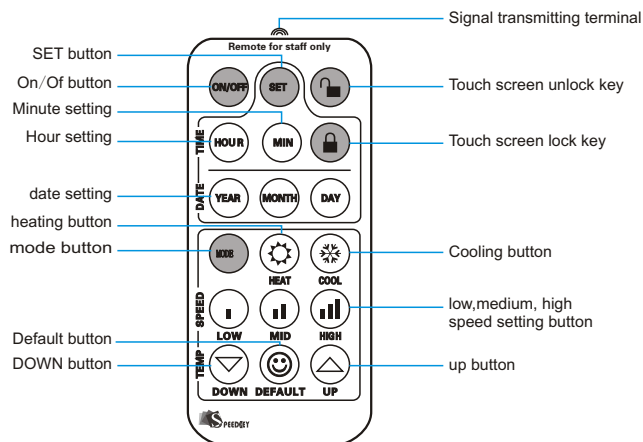


- ☀️❄️ Brightness of both indicators means auto-mode
- ⚡ Flash of illustration indicator means its operation status

Remark: SK-AC2000I Electric Room Thermostat (integral) has no auto mode; it can be only controlled with one single valve.

## PRODUCT DESCRIPTION

### SK-AC2000 Remote explanation



Note: When the touch screen is pressed, the corresponding indicator will be lighted. The touch screen and LCD screen will automatically enter dim backlight mode if no operation in 15 seconds. The system control and setting can be achieved completely via the remote controller. Some special functions have to be achieved only by the remote control.

## PARAMETER SETTING

**Time setting:** the system must be set up with remote controller. Press SET button on the remote at first, and then press HOUR button and set up the hour, and then press MIN button and set up minute.

**Date setting:** the date setting must be set up with remote controller. Press SET button on the remote at first, and then press YEAR button and set up the year; then press MONTH button and set up the month. Press the DAY button and set up the day (customize).

**Note:** Some advanced system can be set up the year, month and day setting with remote controller.

**Minimum relay closing time setting:** This feature can prevent the relay to start in the setting time, the default settings is zero (the relay only changes as the temperature changes). Adjust minimum relay closing time with remote controller, press SET button twice, and use the  $\Delta$  &  $\nabla$  button on the panel to set the minimum relay closing time from 0-15 minutes when the Minute indicator flashes on touch screen.

**Room temperature drift correction:** When the room temperature drifts, correct the deviation of  $\pm 2^{\circ}\text{C}$  with the remote controller, press the SET button three times, use the  $\Delta$  &  $\nabla$  button and correct the deviation (increase 2 or decrease 2) when the temperature display flashes on touch panel.

**Heating mode:** the system must be set up heating setting with the remote controller. Press MODE button, and press  $\odot$  button and set winter heating mode. The default temperature is  $20^{\circ}\text{C}$  when this system restarts. The system will automatically affirm the setting in LCD screen and display the corresponding static icon.

**Cooling mode:** the system cooling setting must be set up with the remote controller. Press MODE button, and press  $\odot$  button and set summer cooling mode. Its default temperature is  $26^{\circ}\text{C}$  when this system restarts. The system will automatically affirm the setting of LCD screen and display the corresponding static icon.

**Auto mode:** Press MODE button twice, the system shall enter into the auto mode, and LCD screen will display  $\odot$  &  $\odot$  icons. When the setting temperature is higher than room temperature, its mode is heating mode; when the setting temperature is lower than room temperature, its mode is cooling mode, and thus it can achieve auto constant temperature (Two valves must be installed for auto mode, namely, cooling valve and heating valve).

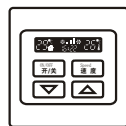
**Note:** if the icon flashes during system operation, it means the valves are open,  $\odot$  flash means heating, and  $\odot$  flash means cooling.

## ■ PARAMETER SETTING

### Parameter setting

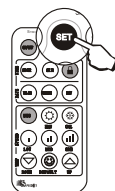
Hotel power-up scene function: when the guest enters room and inserts the card for power, the air conditioning system will automatically enters into its status.

1 Set up temperature and wind speed for the room.

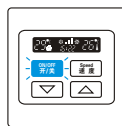


1

2 Press the SET button on the remote, then the touch screen will flash.

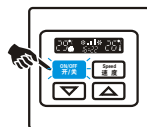


2



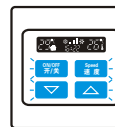
3

3 Press the ON/OFF button on touch screen

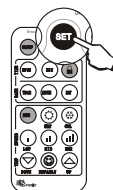


4

4 Finally, press SET button to finish the power-up scene.




5




## ■ PROGRAMMING SETTING

### Lock setting

This system has special lock function to facilitate its management. It will lock the system if necessary.

Lock: The lock function can be achieved only with the remote controller. Press the SET button once at first, then press the  button to lock the system.

Unlock: the unlock function can also be achieved only with the remote controller. Press  on the remote controller and unlock the system.

Note: if the power is off, this setting will be canceled.

### Timing Setting

This function can be achieved air conditioning timing switch. Press SET button twice, the minute digits flash; then press the HOUR button, the hour digits will display 88: flash; set up the time with  $\Delta$  &  $\nabla$  button. If the device is shut down within 15 second after setting it will restart on the setting time. If the device continues the operation after setting time, it will shut down on the end of setting time (customized.)

### Close-fitting service

Professional user can edit timing setting, and then the air conditioning system will run in accordance with the temperature setting and time setting, this shall save time and energy, but this is paid service. Please contact local agent or our company for detail.

## ■ PRODUCT SPECIFICATIONS

Parameter	SK-AC2000I	SK-AC2000sys
Usage range	Single 3 level wind speed fan coil, dynamoelectric water valve, heating control	
Temperature Control range	Regulation from 16℃ to 32℃, auto default temperature, summer 26℃, winter 20℃	
Input power (DC)	100 240V AC	
Display Method	Liquid Crystal Display	
Temperature sensor	LM 75	
Button	Multi-language touch panel button	
Temperature control precision	±1℃	
Dissipation power	<1.2W	
Current Loading	5(3)A AC60/50HZ, 110/240V, ±10%	
Service life	Touch Panel button 1 million times, touch point 100 thousand times	
Installation	Install in the standard Bs4662 base box with screw and bracket	
Dimension	W86mm×H86mm×D46mm	
Environment	Operate temperature range: 0℃—50℃. Transport and store temperature range: -10℃ to 60℃	
Control	Single valves	Single valves, double valves
Operate Mode	Heating Cooling	Heating Cooling Auto mode
Galvanothermy control	NO	Can be up to 10A

## ■ TROUBLE SHOOTING GUIDE

Symptom	Possible cause	Solutions
No backlight of touch screen	1 Incorrect wiring or poor contact.	Make sure that input and output line is tightly connected on the terminal with correct connection.
	2 Main switch or creepage protection switch is off.	Turn on the main switch or creepage protection switch, please check the equipment if the trip still occurs and ensure that there is no creepage.
	3 No neutral line connected of the system	Connect neutral line to the terminals correctly.
	4 Burnt fuse	Replace the fuse with the same parameter.
	5 Auto protection of the system	Turn off the power and restart
Auto-shut of the controlled equipments	1 Unstable Voltage, too much interference	Stop using heavy interfering equipment, and ask local technician for check.
	2 Incorrect wiring	Fasten the wire, and ensure the correct connection.
	3 Shut by remote controller	Set the control setting of remote controller; and ensure light control method. (Remote setting)
No shut-off of air conditioner	1 Overload current	Reduce the load and turn on power again. If it doesn't work, please change the driving part.
Ceaseless Flash for touch screen	1 Broken or invalid for touch screen	Replace the touch screen.
	2 Entering setting mode of touch screen	Exit the setting mode by remote controller.
	3 Automatic protection status of touch screen	Turn off the power.



**SPEEDKEY™** SPEEDKEY TECHNOLOGY CO.,LTD.

Specifications subject to change without notice. ©2008 All rights reserved [www. speed-key. com](http://www.speed-key.com)