

# Thermostat Display Control

omnistat2™



## APPLICATION

The Thermostat Display Control (TDC) acts as a remote interface for use with Leviton's RC-2000 series thermostats, both wired and ZigBee wireless versions. The easy-to-use controls and bright OLED display make the control and adjustment of interior comfort settings both simple and beautiful.

## ATTRACTIVE REMOTE CONTROL

Leviton customers can now conceal their thermostat in a utility room, an attic, or a basement, and provide control from a convenient location.

## HOW DOES IT WORK?

The TDC wires back to a Leviton RC-2000 thermostat using a single Cat5e cable. The simple four-button control mounts in a standard sized single-gang wall box for a consistent aesthetic with Decora® light switches and Leviton's Hi-Fi 2 Volume Source Control and Remote Input Modules. Use the up or down arrow to adjust temperature settings in the area. Press the fan button to circulate air, a low-cost alternative to constant heat or air production.

## Can This Device Sense Temperature Changes?

Yes, the TDC has a built-in internal sensor that can be averaged with all of the other TDC sensors and/or the sensor in the RC-2000 itself. Temperature averaging allows for precise reading and automation for enhanced energy efficiency. The TDC group average value is treated as a single remote sensor value and averaged with any other sensors selected on the thermostat menu, including the thermostat's internal sensor.

## WHAT ELSE DO I NEED?

The TDC requires a communication adapter, part number 65A60-1, which provides both power and communication from the RC-2000 thermostat to up to four TDC units. A kit that includes both the TDC and the power supply is available, part number 95A03-1TKT. Individual Color Change kits are also available.

## HOW MANY CAN I USE?

With a Leviton automation system, you can connect up to 64 RC-2000 thermostats. Each RC-2000 thermostat, coupled with a communication adapter, is capable of attaching four TDC's for remote control throughout the property.

## FEATURES AND BENEFITS

- Elegant remote interface for RC-2000 thermostats
- Provides temperature sensing as well as thermostat control
- TDC temperature sensor can be averaged with all of the attached TDC units and /or RC-2000
- Up to 4 TDC units per RC-2000 thermostat
- Mounts in a standard single-gang wall box

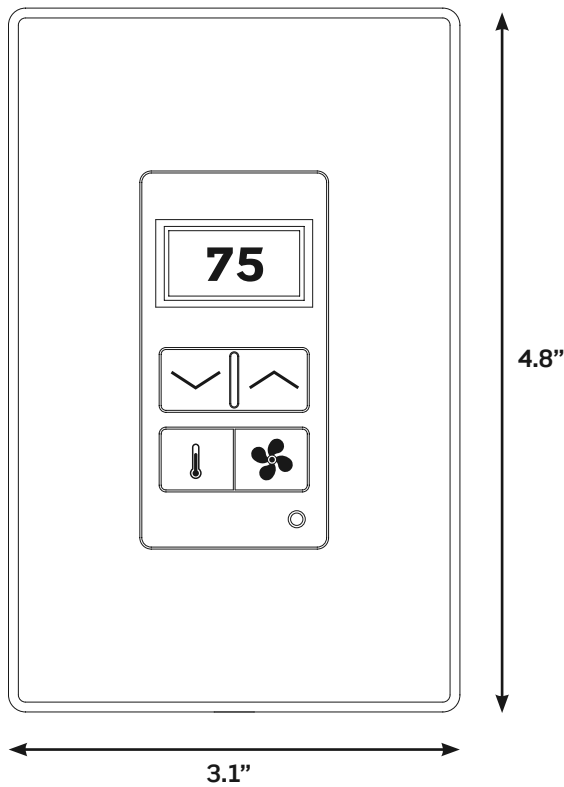
**AGENCY STANDARDS AND COMPLIANCE**

- Complies with FCC Part 15, Class B

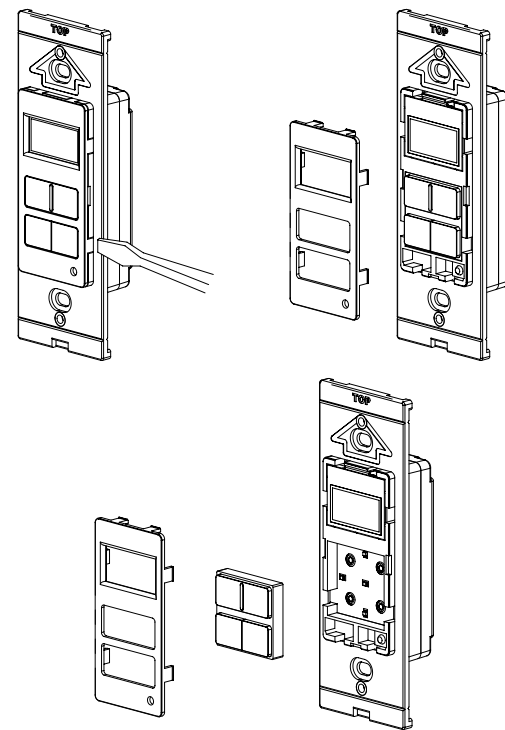
**WARRANTY INFORMATION**

Two-Year Limited Warranty

**DIMENSIONAL DRAWINGS**



**COLOR CHANGE KIT**



Product Name

**ORDERING INFORMATION**

DESCRIPTION	COLOR	CAT. NO.
TEMPERATURE DISPLAY CONTROL	WHITE	95A03-1TWH
COMMUNICATIONS ADAPTER	N/A	65A60-1
TDC + COMMUNICATIONS ADAPTER	WHITE	95A03-1TKT
COLOR CHANGE KIT	WHITE	95A19-WH
COLOR CHANGE KIT	BLACK	95A19-BL
COLOR CHANGE KIT	LIGHT ALMOND	95A19-LTA

**Leviton Manufacturing Co., Inc. Global Headquarters**

201 N. Service Rd. Melville, NY 11747-3138 • Tech Line: 1-800-824-3005 • Fax: 1-800-832-9538

**Leviton Security & Automation.**

4330 Michoud Blvd., New Orleans, Louisiana, 70129 • Telephone: 1-504-736-9810 • FAX: 1-504-253-2954

Visit our Website at: [www.leviton.com/automation](http://www.leviton.com/automation)

© 2015 Leviton Manufacturing Co., Inc. All rights reserved. Subject to change without notice.