



E10W230WIFI



E10B230WIFI

Quick Guide

Distributor:

QL CONTROLS Sp z o.o. Sp. k.
43-262 Kobielice
4 Rolna St.
Poland

Producer:

Enigo Controls S.C.
43-200 Pszczyna
3E Górnośląska St.
Poland

Ver. 1
Release date: X 2022

www.engocontrols.com

E10 is a wired temperature thermostat with a WiFi and Bluetooth module. It enables economic and ecological control of any type of heating. Provides remote control of the heating system using the ENGO Controls / Tuya Smart application. It is characterized by a clear menu and a multitude of useful functions. Programming the E10 is very simple and allows you to adjust the heating cycle to the user's daily rhythm. The model is available in white and black.

Product Compliance

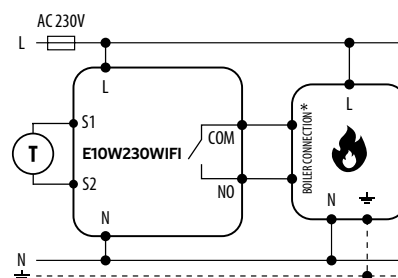
This product complies with the following EU Directives: 2014/53/EU, 2011/65/EU

Technical Informations

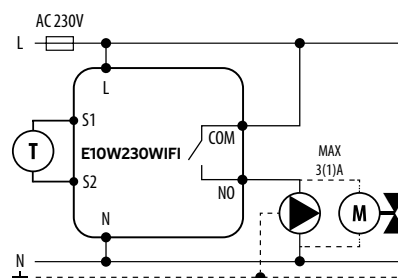
Power supply	230V AC 50 Hz
Max current	3(1)A
Temperature range	5,0°C to 45,0°C
Display temperature accuracy	0,1°C
Control algorithm	TPI or Hysteresis ($\pm 0,1^{\circ}\text{C}$ - $\pm 0,5^{\circ}\text{C}$)
Communication	WiFi 2,4 GHz
S1 - S2 input	Floor temperature or air temperature sensor
Output control	COM / NO (voltage-free)
IP protection class	IP30
Dimension [mm]	86 x 86 x 39 mm (14 mm after in box mounting Φ 60)

Connection description

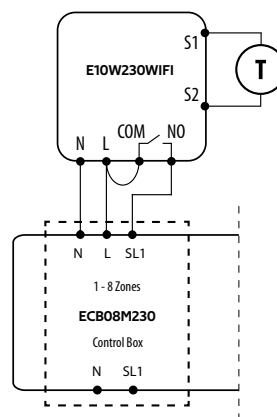
a) Connection diagram for gas boiler



b) Connection diagram to pump / actuator



c) Connection diagram to the control box



Legend:



Boiler - Boiler connection*
- Boiler's contacts for ON/OFF thermostat (according to the boiler's instructions)



Pump



Valve



Temperature sensor

Symbols explanation:

L, N - power supply

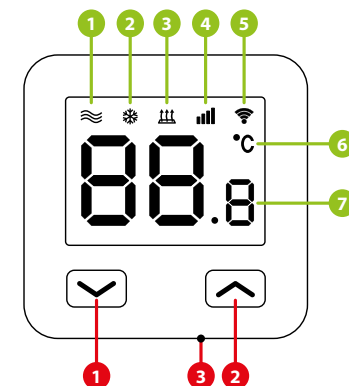
COM, NO - voltage-free output

S1, S2 - output for temperature sensor

SL1 - 230V control input in the control box

- fuse

LCD icon description + Button description



1. Heating icon
2. Frost protection mode
3. Excessive floor temperature
4. Internet
5. Connection with Wi-Fi
6. Current room temperature
7. Current / setpoint room temperature

1. "DOWN" button
2. "UP" button
3. "RESTART" button

Installation of the Wi-Fi thermostat in the app

Make sure your router is within range of your smartphone. Make sure you are connected to the Internet. This will reduce the pairing time of the device.

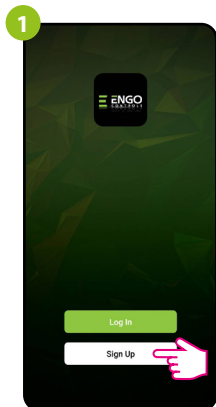
STEP 1 - DOWNLOAD ENGO SMART APP

Download the ENGO Smart app from Google Play or Apple App Store and install it on your smartphone.

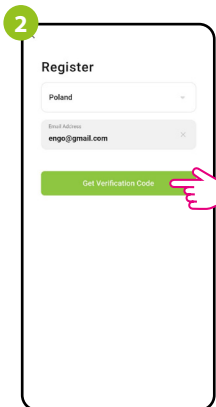


STEP 2 - REGISTER THE NEW ACCOUNT

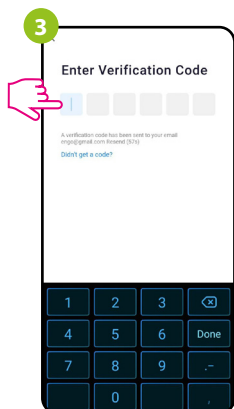
To register a new account, please follow the steps below:



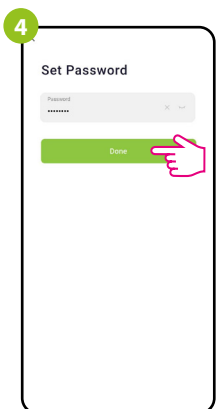
Click „Register“ to create new account.



Enter your e-mail address to which the verification code will be sent.



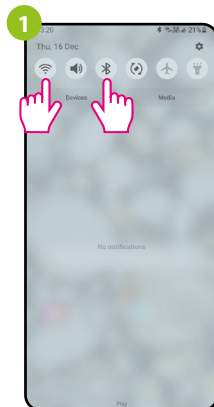
Enter the verification code received in the email.
Remember that you only have 60 seconds to enter the code!



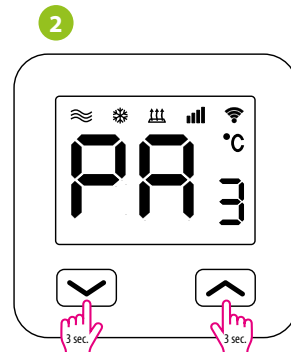
Then set the login password.

STEP 3 - CONNECT THE THERMOSTAT TO WI-FI

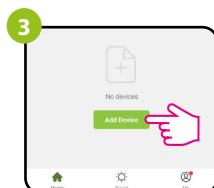
After installing the app and creating an account:



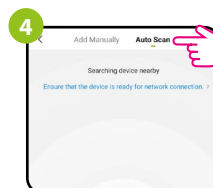
Turn on Wi-Fi and Bluetooth on your smartphone. It's best to connect mobile to the Wi-Fi network to which you want to assign the thermostat.



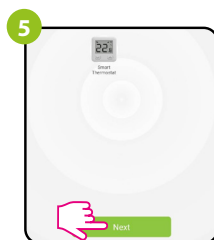
Make sure the thermostat is powered on. Then press and hold the buttons on the thermostat for approx. 3 seconds until the display shows „PA“. Then release the keys. The pairing mode will be started up.



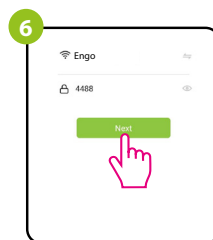
In the app, select: „Add Device“.



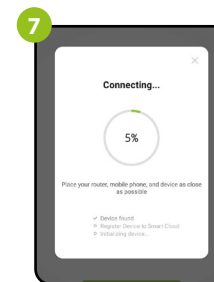
Then choose: „Auto Scan“.



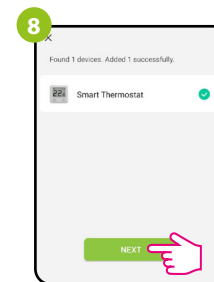
After finding the thermostat, go „Next“.



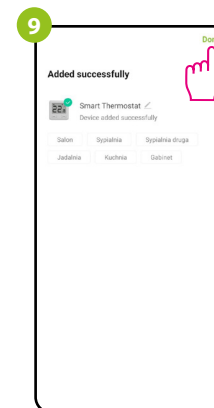
Select the Wi-Fi network in which the thermostat will operate and enter the password of this network.



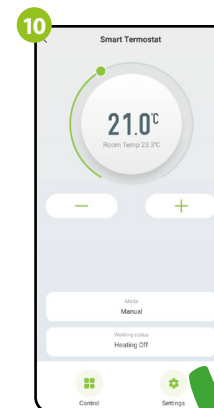
Wait for the app to configure the thermostat with the selected Wi-Fi network.



Go „NEXT“.



Name the device and click „Done“.



The thermostat has been installed and displays the main interface.

How to fix the problem?

DESCRIPTION	TROUBLESHOOTING
The internet connection icon is not displayed on the thermostat.	The thermostat is not connected to the Internet. Check the connection between thermostat and Internet. In this case, it is possible to control the thermostat locally using a mobile device. The mobile device and the thermostat must be on the same Wi-Fi network.
The Wi-Fi connection icon is flashing on the thermostat.	1. The Wi-Fi network in which the thermostat was installed is turned off. Check the router and Wi-Fi connection. In this case, it is possible to control the thermostat locally via Bluetooth. The mobile device must have access to the Internet (via Wi-Fi or mobile data) and be near the thermostat. 2. The thermostat is in pairing mode. Reinstall the thermostat.
Thermostat displays error E2.	Check or connect the external temperature sensor.
The thermostat has the display off.	Check if you connected the wires correctly or if the thermostat is not turned off in the app.

Restore default settings

To restore the default settings of the thermostat, hold down the + buttons for approx. 8 seconds, „FA“ monit will be displayed. After all, the thermostat will go through a default reset sequence and display the main screen.