



TYBOX 817- 827 W RF

1 and 2-channel wireless programmers with built-in thermostat

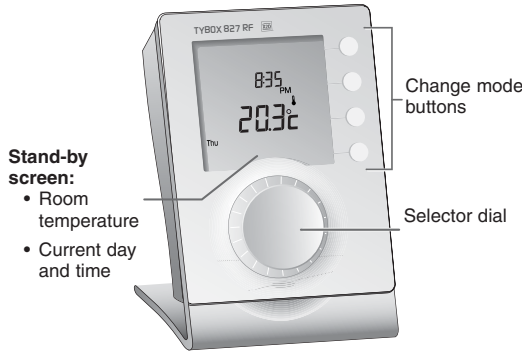
User guide



- Carefully read these instructions prior to use.
- Do not attempt to repair the unit yourself; an after-sales service is available.

1. Presentation

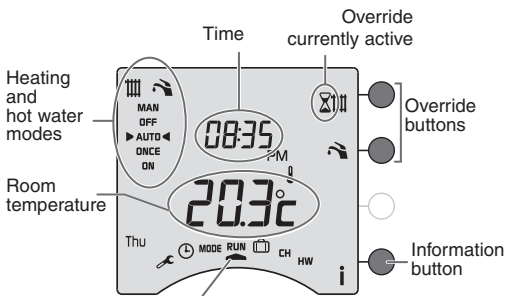
- These instructions apply to both the **TYBOX 817 WRF** and the **TYBOX 827 WRF**.
- The hot water mode (🚿) is only available on the **TYBOX 827 WRF**.



- On the receiver:**
- the green LED indicates that the product is switched on,
 - the red LED indicates the status of the output(s): light on = ON, light off = OFF.

2. RUN Mode

Press a button to “activate” the display.



General mode active

- 🔧 Configuration
- 🕒 Time setting
- MODE Operating mode selection
- RUN Run the operating mode selected
- 👤 Absence mode
- CH Heating programming
- HW Hot water programming



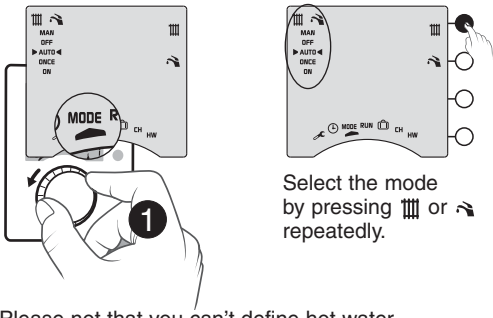
Delta Dore hereby declares that the equipment complies with the essential requirements and other relevant provisions of the R&TTE Directive 1999/5/EC.

The EC declaration of conformity for this equipment is available, on request, from:
“Technical info” department
DELTA DORE - Bonnemain - 35270 Combours (France)
Email: info.techniques@deltadore.com



Because of changes in standards and equipment, the characteristics given in the text and the illustrations in this document are not binding unless confirmed.

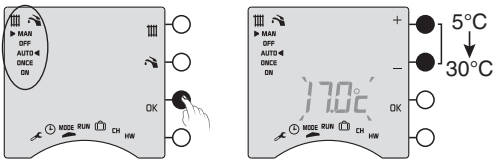
3. Choosing the operating mode



Please not that you can't define hot water temperature in this programmer

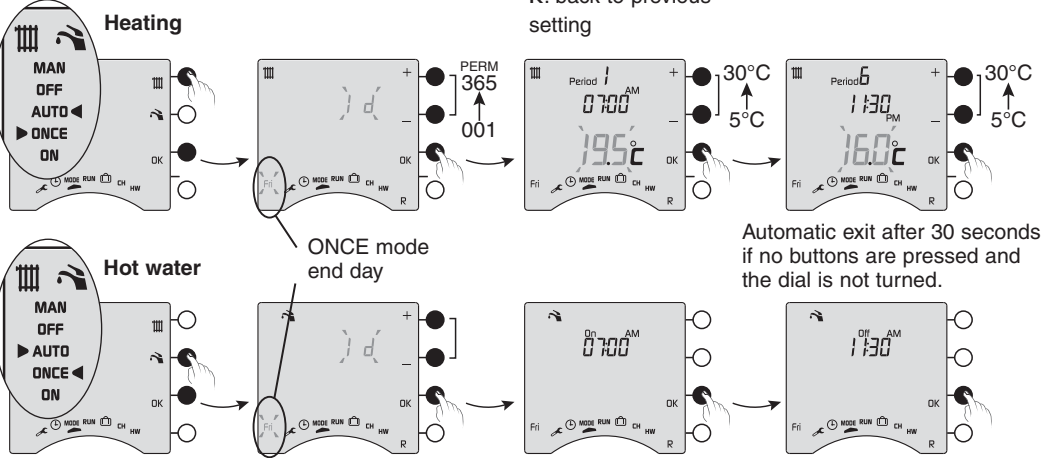
	MAN	OFF
MAN	Constant temperature setting	NA
OFF	Frost Protection	Off
AUTO	Follows the programming	
ONCE	Follows the ONCE programme. Return to AUTO mode at the end of the countdown.	
ON	NA	Permanent ON

MAN Mode



Turn the dial to exit the setting mode.

ONCE Mode

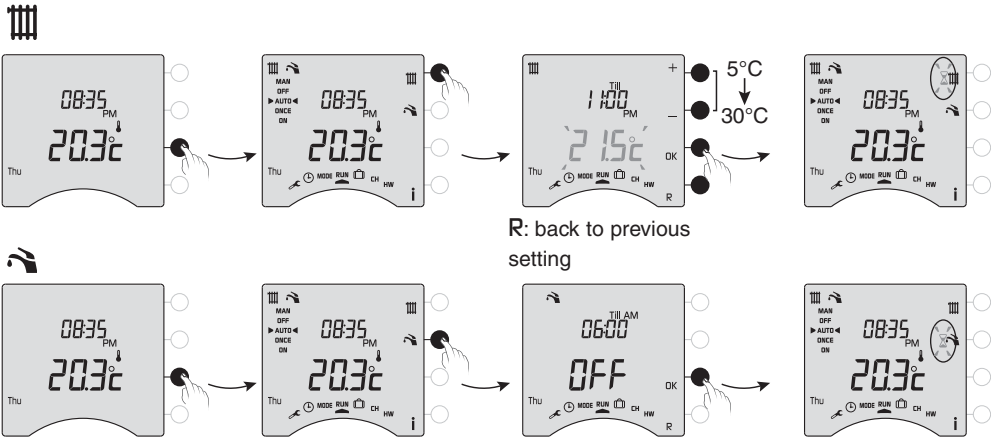


4. Override

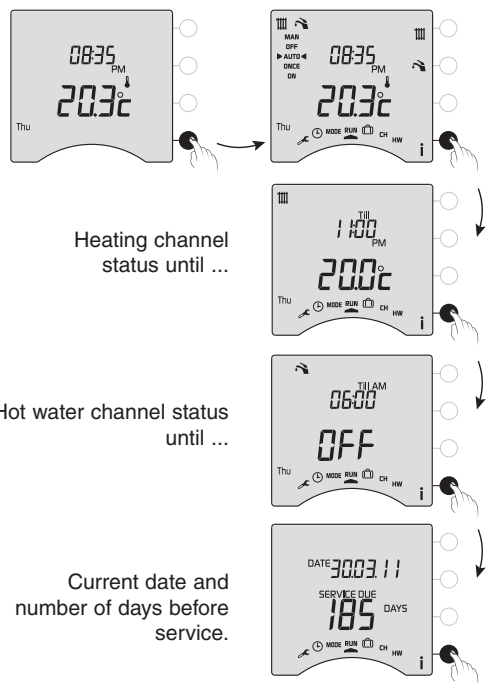
From the RUN mode, override enables:

- for the heating, modification of the temperature setting (5°C to 30°C) until the next programme change
- for the hot water, modification of the current operation (ON/OFF) until the next programme change

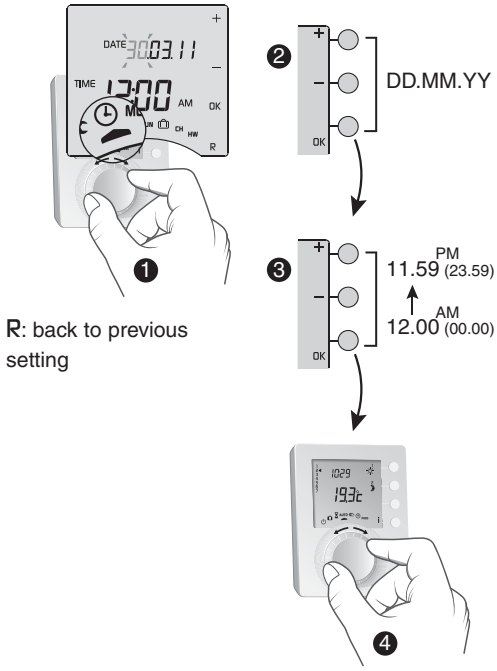
- Override is only accessible in AUTO or ONCE mode.
- To cancel an active override, press the relevant button (MAN or OFF) or turn the dial.



5. Information button

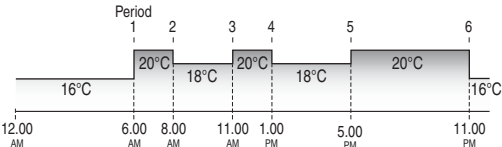


6. Date / Time

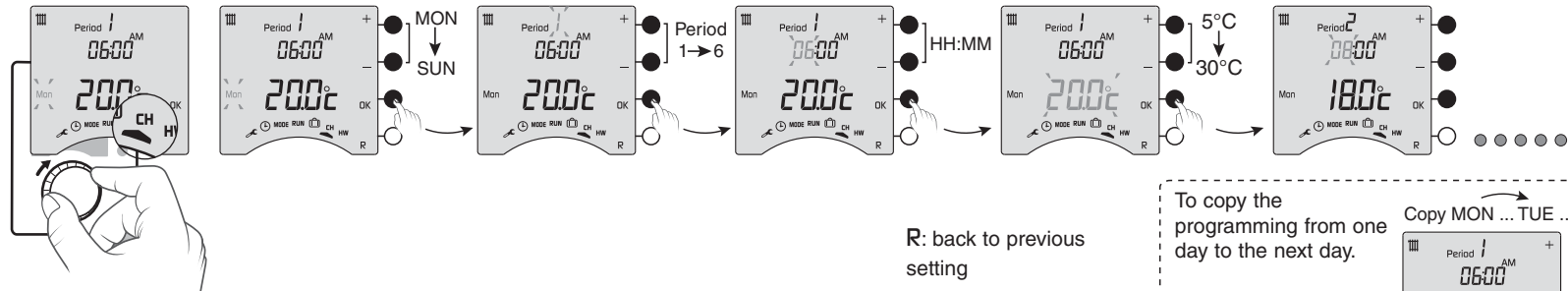


7. Programming the heating

Example: default programme applied from Monday to Friday:

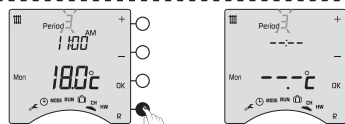
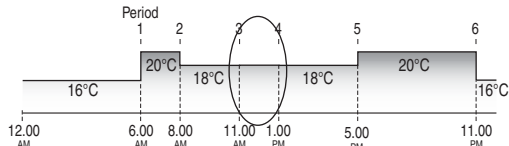


The programme can be changed for each day.



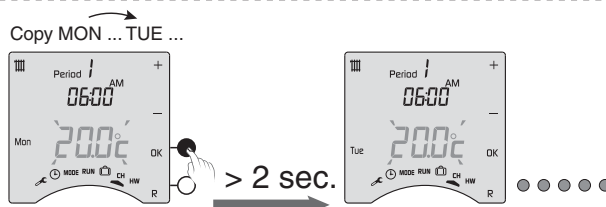
A simplified programme can be applied (2 programmable periods) for a set number of days (ONCE mode).

Periods 2 to 5 can be disabled. For example, disabling the midday slot (periods 3 and 4).



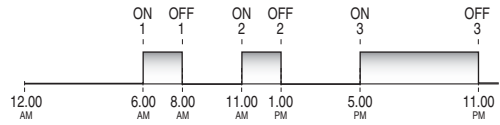
To return to the program, press the R button again and hold for 2 seconds.

To copy the programming from one day to the next day.

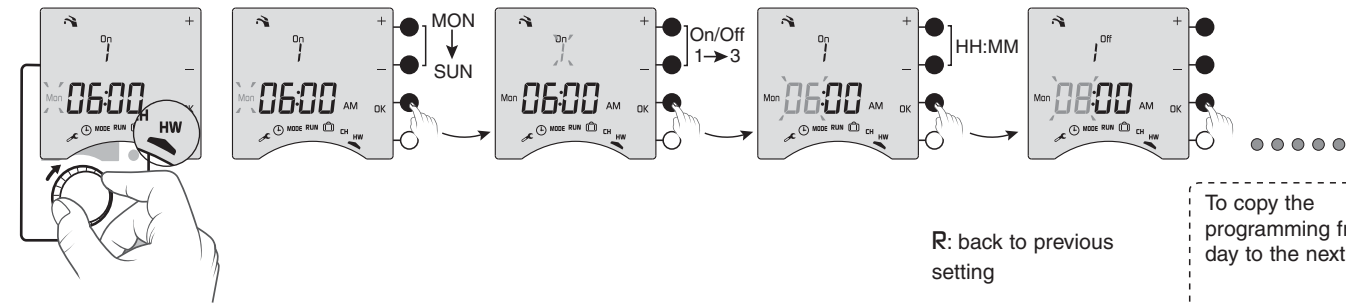


8. Programming the hot water channel

Example: default programme applied from Monday to Friday:



The programme can be changed for each day.

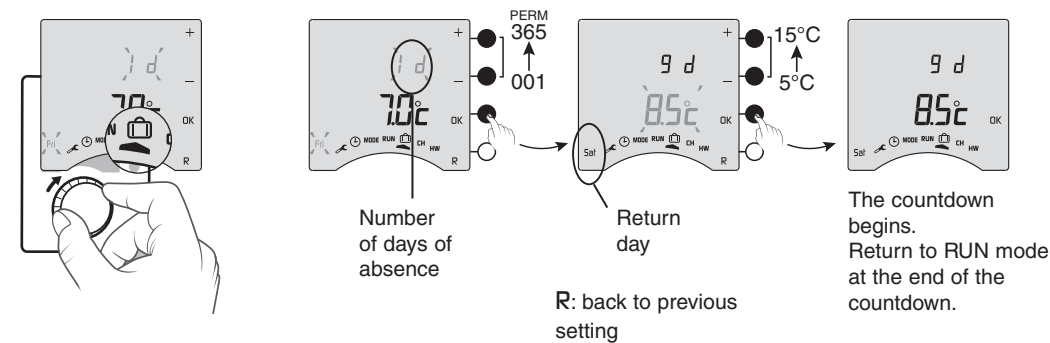


A simplified programme can be applied (2 programmable periods) for a set number of days (ONCE mode).

ON/OFF periods 2 and 3 can be disabled. For example, inhibition of the midday slot (ON and OFF period 2).

To cancel the inhibition, press the R button again and hold for 2 seconds.

9. Absence mode



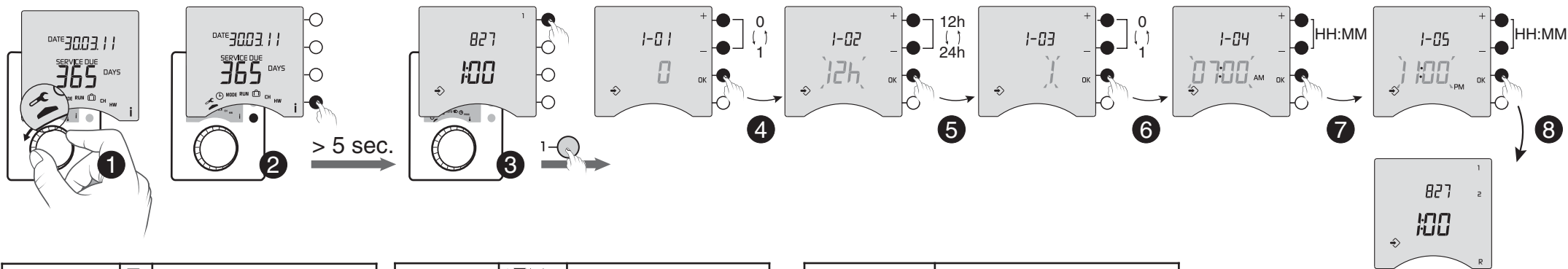
10. Compatible home automation options

You can associate your programmer with the following options:

Type of transmitter associated	Resulting function
Opening detector	“Energy saving” function Heating switches to Frost Protection mode when a window is opened (temperature set in mode).
Wireless outdoor sensor	Indication of outside temperature by consulting the information menu (button).

For information about associating and using home automation products, contact:
“Technical info” department
DELTA DORE - Bonnemain
35270 Combourg (France)
Email: info.techniques@deltadore.com

11. Basic configurations (menu 1)



1-01 User modification authorisation	0	Modification of programme and temperature settings (from 5 °C to 30 °C) authorised (default)
	1	Modification of programme not authorised and temperature settings restricted (19 °C +/- 3 °C)

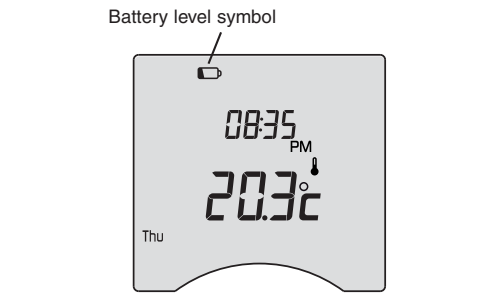
1-02 Time display selection	12h	12-hour clock (default)
	24h	24-hour clock

1-03 Automatic summer/winter mode authorisation	0	Not authorised
	1	Authorised (by default)

1-04 ONCE programme start time	Setting from 12 midnight to 12 noon (default value: 07:00 AM)
---	--

1-05 ONCE programme end time	Setting from 12 noon to 12 midnight (default value: 11:00 PM)
---------------------------------------	--

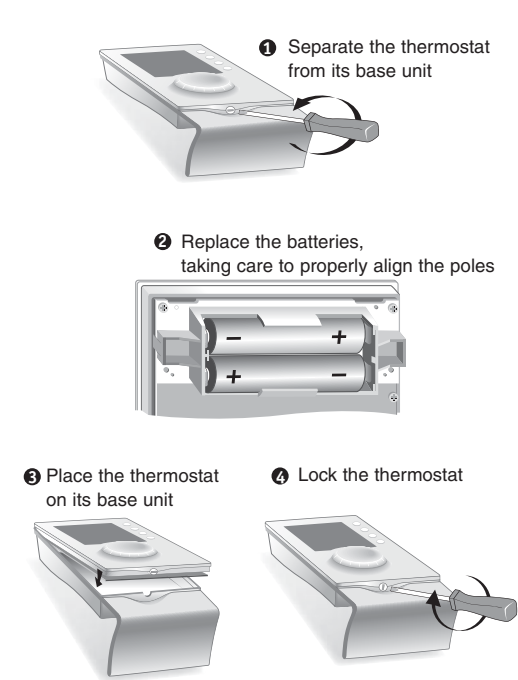
12. Replacing the batteries



The batteries need changing when the battery level symbol appears (2 LR03 or AAA 1.5V alkaline batteries).

Precautions must be taken:

- You have approximately 30 seconds to change the batteries before the time is reset to zero (if this happens, reset the time).
- Ensure that the +/- polarities are correctly placed when the battery is fitted into the unit.
- Do not dispose of used batteries in unauthorised places (you should respect the environment by taking the batteries to a suitable collection site).
- Do not recharge them.



13. Troubleshooting

Nothing is displayed on the room unit screen.
There is no power supply.
Check the batteries.

The unit is in time setting mode.
You took too much time in changing the batteries.
Set the time. All the other settings have been kept.

The temperature displayed does not match the temperature measured in the room (thermometer).
Refer to the installation guide (menu 2-01).

The programme cannot be modified and the temperature settings are limited (19 °C +/- 3 °C).
Refer to the Configuration section (menu 1-01).

“SERVICE DUE” is flashing on the display.
There are less than 30 days before the mandatory service is due.
Contact your maintenance department.

“SERVICE DUE” is displayed on the unit.
The mandatory service date has passed.
The heating works on a set temperature setting (override possible for 1 day).
The hot water will shut down (override possible for 2, 3 or 4 hours).
Contact your maintenance department.

The heating does not work according to the required temperature.
If you have a Room Thermostat wired in series with the programmer, check that this thermostat is set to maximum.

Your heating system is in Frost-Protection mode (temperature set in mode).
The dial is still in position, , , CH or HW.