

DELTA 8000 TA BUS

EN Zone thermostat for Underfloor heating



Installation instructions

TECHNICAL CHARACTERISTICS

- Power supply by the bus, 24V
- Bus Input/output 2 wires
- Class III insulation
- Surface-mounted or on flush-mounting box
- Dimensions: 81 x 88 x 21 mm
- Degree of protection: IP 30
- Operating temperature: 0 to +40°C
- Storage temperature: -10 to +70°C
- Installation in an environment with normal pollution levels

CONTENTS

1/ Location/Mounting	4
2/ Association of the thermostat with the technical unit.	7
3/ Configuring the room thermostat	9
4/ Initialisation	14
4.1 Deleting all the association bus with the technical unit	14
4.2 Deleting the association of the thermostat with the technical unit	16
4.3 Initialising the room thermostat settings	17

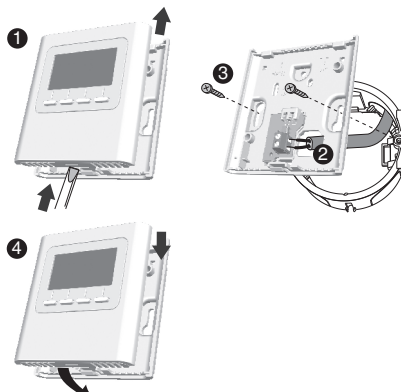
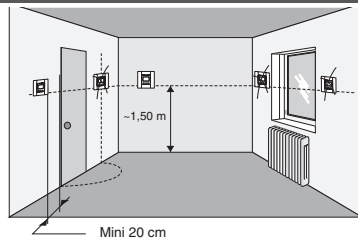
1/ LOCATION/MOUNTING

Since the temperature measurement sensor is inside the unit, you must install the thermostat flush-mounting box:

- on an accessible wall at a height of 1.50 m
- away from heat sources (fireplaces, sunlight) and draughts (windows, doors)

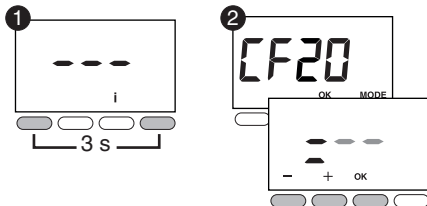
IMPORTANT: Do not install the thermostat on a wall in contact with the outdoors or with an unheated room (e.g. garage, etc.)
The sleeve output in the flush-mounting box must be blanked off (with mastic) in order to avoid unwanted air movements that would cause the sensor reading to be inaccurate.

- 1 Separate the unit from its base by pushing the pin using a screwdriver.
- 2 Connect the bus to the terminal on the base
- 3 Mount the base to the flush-mounting box.
- 4 Refit the thermostat back on its base.



2/ ASSOCIATION OF THE THERMOSTAT WITH THE TECHNICAL UNIT.

- 1 Press and hold the 1st and the 4th button for 3 seconds. Release.
- 2 The screen displays **CF20**.
Press OK then press + and - to select the output with which the room thermostat will be associated.
Confirm with OK.
- 3 The screen displays **CF21**.
Select the transmitter and press OK.
- 4 The screen displays **CF05**.
Select the thermostat type and press OK.

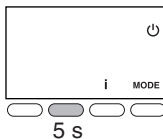


CF20	Output number	1 to 16 depending on the system.	
CF21	Transmitter type	0	Underfloor heating (by default)
		1	Heater
		2	Ceiling or ductable
CF05 ⁽²⁾	Thermostat type	0	Zone thermostat
		1	Master thermostat

(2) CF05: the Master thermostat enables the centralised use of ON/OFF and HEAT/COOL (at least one Master thermostat is required in an installation without a programmer).

3/ CONFIGURING THE ROOM THERMOSTAT

- 1 From the OFF mode.
Press and hold the 2nd button from the left for 5 seconds.
Release.



- 2 Tap the OK button.
Release.



- 3 The screen displays **CF01**.
 - Press + or - to select the menu.
 - Press OK to enter the setting mode, then + and - to perform the setting.



	Temperature management	On/Off management	HEAT/COOL mode management
Master thermostat	On the controlled zone	On all zones	On all zones
Zone thermostat	On the controlled zone	On the controlled zone	-

3/ CONFIGURING THE ROOM THERMOSTAT

EN

CF01	Correction of the measured temperature	+/- 5°C in 0.1°C increments (0°C by default)	
CF02	Temperature displayed in normal mode	0	Setting display (default selection)
		1	Display of the measured temperature.
CF03 ⁽¹⁾	Ban on the Cool regulation on the thermal zones of the Room Temperature (if SW2 = ON)	0	No ban (default selection)
		1	Ban
CF04	Display the status (ON) of the associated output	0	No (default selection)
		1	Yes
CF05 ⁽²⁾	Thermostat type	0	Zone thermostat (default selection)
		1	Master thermostat

⁽¹⁾ CF03 only appears in Heat/Cool production mode (SW2=ON, refer to the technical unit manual) and for underfloor heating (CF21 =0) or for ceiling/ductable (CF21 = 2).

⁽²⁾ CF05: the Master thermostat enables the centralised use of ON/OFF and HEAT/COOL (at least one Master thermostat is required in an installation without a programmer).

3/ CONFIGURING THE ROOM THERMOSTAT

EN

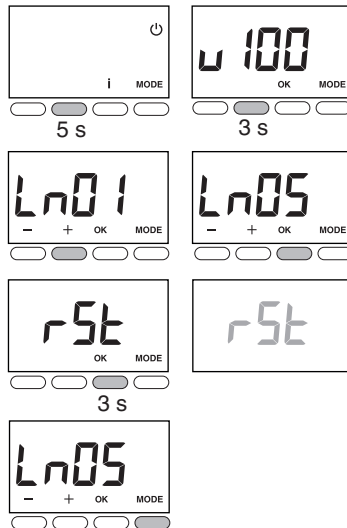
CF06	Activation of the window/door magnetic contact function (the room thermostat switches to Frost Protection mode if the window/door magnetic contact is activated).	0	Not activated
		1	Activated (default selection)
CF08	'Presence detection' function (the thermostat lowers its setting in the event that no presence is detected).	0	Not activated
		1	Activated (default selection)
CF11	Standby mode	0	Display off after a 10 seconds time-out period
		1	Display illuminated continuously (default selection)
CF12	Backlighting	0	Deactivated
		1	When activated, it goes out after a 5-second time-out period (default)
CF20	Output number	1 to 16 depending on the system. '-' is displayed if none are allocated.	
CF21	Transmitter type	0	Underfloor heating (by default)
		1	Heater
		2	Ceiling or ductable
CF22	Heating percentage limitation	From 10 to 100% in increments of 10 (100%= No limitation, by default).	

4/ INITIALISATION

EN

4.1 DELETING ALL THE ASSOCIATION BUS WITH THE TECHNICAL UNIT

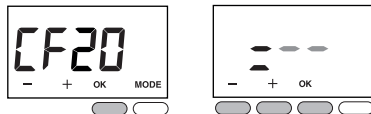
- 1 From the OFF mode.
Press and hold the 2nd button from the left for 5 seconds. Release.
- 2 Press and hold the 2nd button from the left again for 3 seconds. Release.
- 3 The screen displays **Ln01**. Press + to display **Ln05**.
- 4 Press OK. The screen displays **rSt..** Press and hold OK for 3 seconds.
rSt flashes for 2 seconds.
Release.
- 5 Press MODE to exit.



4/ INITIALISATION

4.2 DELETING THE ASSOCIATION OF THE THERMOSTAT WITH THE TECHNICAL UNIT

Press OK to open the setting, then press + and - to select «= --». Confirm with OK.



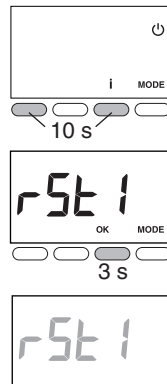
4.3 INITIALISING THE ROOM THERMOSTAT SETTINGS

EN

This menu restores the system to factory settings.

- 1 From the OFF mode. Simultaneously press the 1st and 3rd buttons from the left (i) for 10 seconds. The screen displays **rSt1**. Release.
- 2 Press and hold OK for 3 seconds until the rSt display flashes. Release.

The system automatically returns to OFF mode.





www.deltadore.com

09/18



2704573 Rev.02