

MTD3 MANUAL

A Comfort Heat floor heating system has been installed in your floor. Floor heating warms from the ground up providing an unparalleled feeling of comfort. This heating system is controlled by an electronic thermostat and floor sensor for optimum temperature control and efficiency.

MTD3 DETAILS

The MTD3 thermostat is a manual ON/OFF thermostat you set to a fixed temperature. Once the floor reaches the set temperature, the system will turn ON and OFF automatically maintaining the fixed temperature.

PRIOR TO TURNING ON

Concrete slabs, screeds and tile glues must be fully cured before turning the heating system on. Wait at least 3 weeks and when turning on for the first time, increase the floor temperature gradually over 2-3 days.

Under carpet and timber systems can be turned on once installation is complete.

CABLE WARRANTY & SUGGESTED FLOOR TEMPERATURES

AREAS	TILE [BATH]	TILE [LARGE AREA]	INSLAB	CARPET	TIMBER
SUGGESTED TEMPERATURE	24-28°C	21-22°C	21°C	19-21°C	24°C
CABLE WARRANTY	10 years	10 years	10 years	5 years	5 years



TECHNICAL DATA - MTD3

Supply Voltage:	240VAC, 50/60hz
Output Relay:	16A SPST, 3600W max
Switching Differential:	0.4 degC
Built-in Switch:	2 pole 16A
Temperature Range:	0/+40 degC
Housing/protection:	IP21
Dimensions (HxWxD):	115mm x 84mm x 40mm
Sensor Length:	3m
Mounted:	Vertical/Horizontal Flush mounted
Warranty:	2 years

MTD3 OPERATION SETTINGS

TURNING ON

- > Open the front cover of the thermostat and slide the power switch ON.
- > Press red(up) and blue(down) button to set the fixed **set point temperature**.
- > Press Menu/Select [grey] button to set.

The thermostat screen is set to display the **set point temperature** and not the current running temperature. The three heating squiggles at the top of the thermostat screen will turn on when the floor is heating.

RUNNING GUIDELINES

Due to the MTD3 being a manual thermostat, it is typically used in small areas, at low temperatures, and not turned ON/OFF daily. The temperature is set and the thermostat is left to maintain a fixed temperature 24/7.

The MTD3 is also used with large in-slab areas which are connected to a **dedicated off-peak circuit**. Slabs have a large thermal mass and the ability to store heat for long periods of time. Heating slabs during off-peak times is a cost efficient heating option. Please note it must be a dedicated off-peak circuit. Electricity calculated via smart meters and time of use require a digital MWD5 thermostat providing the ability to programme heating at off peak times.

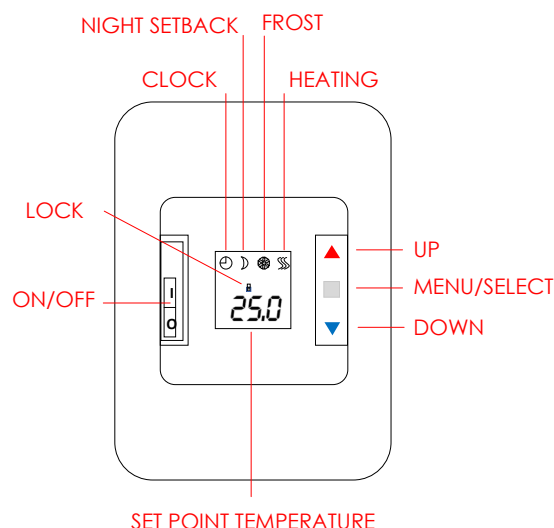
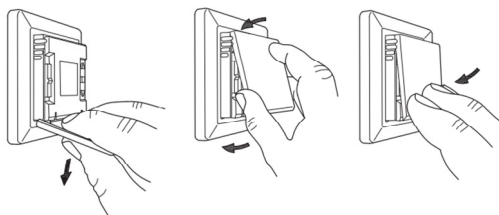
CHILD LOCK

- > Press and hold the up and down arrow buttons simultaneously, until a lock appears onscreen.
- > Press and hold the up and down arrow buttons simultaneously, until a lock disappears.

CHANGE FRONT COVER

The MTD3 comes with an alternate plain cover plate for a minimal look. To change the cover;

- > Open the cover wide
- > Hold plate close to the thermostat and pull down.
- > Align alternate cover at top of thermostat and apply pressure on the bottom.



SETTING PARAMETER VALUES – MENU MODE

Parameter settings allows you to set a range of values to define heating options and temperatures. See the MTD3 included manual to view the full range of parameter options. Most default values need no adjustment.

To enter menu mode;

- > Press Menu/Select button for 5 seconds.
- > Scroll through menu options with arrow buttons
- > Press Menu/Select to enter selection. [See full instruction manual]
- > Scroll down to [donE] and press Menu/Select to exit menu mode.

MENU	DESCRIPTION	SETTINGS	DEFAULT
APP	Choose sensor to control heating	A / F / C / AF / AE	F [Floor]
SCA	Set the min. and max. temperatures	0°C - 40.0°C	0°C - 40.0°C
tP	Temperature read out	Flo / ro	Flo [floor]
LCd	Select; Temp. setting & Display setting	C / F / nu & SP / tP / CL	C [celcius] & SP[setpoint]
AdJ	Calibrate the measured room temperature		
nSb	Night setback temperature	2.0°C - 8.0°C	5°C
dEF	Frost protection	5.0°C - 10.0°C	8°C
PWM	Duration of the heating periods	oFF / on / Aut	
PLi	Power limit	0 - 30min	0
tiME	Time and event setting	ModE / dAY / Hour / Min	
SW	Software version		
donE	Save settings and Exit menu		

TROUBLE SHOOTING

If an error message occurs, the thermostat will display one of the following errors;

E0 : Internal failure. The thermostat is defective. Thermostat must be replaced.

E1 : Internal room sensor defective or short-circuited. Thermostat must be replaced.

E2 : External floor sensor disconnected, defective or short-circuited. Requires floor sensor reconnection or replacement.

E5 : Internal overheating. Installation requires inspection.