



Owner's Guide

TH303

Programmable Thermostat

400-303-000-C

Table of contents

Overview

About your new thermostat	1
Quick reference to controls	2
Quick reference to screen display	3

Installation

Removing the faceplate.....	4
Wiring	5
Installing the thermostat	6
Quick start-up / Setting the clock.....	7

Operating modes

Automatic (Auto) mode.....	8
Manual (Man) mode	9
Away mode.....	10
Countdown mode	11

Configuration

Default schedule.....	12
Modifying the schedule.....	13
Setup parameters	14
Setup procedure	16

Appendices

In case of difficulty	17
Customer assistance	18
Specifications.....	19
3-year limited warranty	20

About your new thermostat

This thermostat has been designed to control an electric heating system such as a baseboard heater, a radiant ceiling, a convector or a fan-forced heater.

The thermostat **CANNOT** be used with:

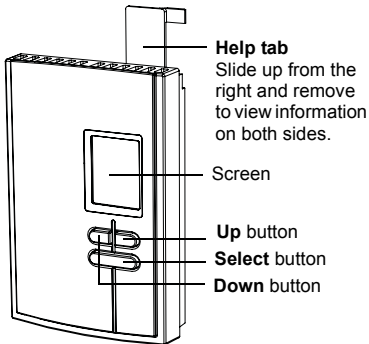
- a resistive load under 0.83 A
- a resistive load over 10.4 A
- a system driven by a contactor or a relay (inductive load)
- a central heating system

SUPPLIED PARTS

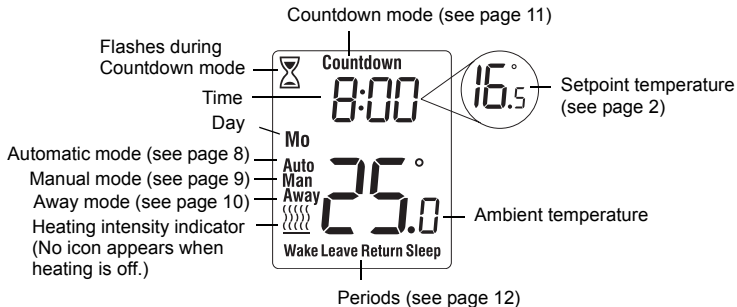
- One (1) thermostat
- Two (2) 6-32 mounting screws
- Two (2) solderless connectors

Quick reference to controls

- **To turn the screen backlight on**, press the **Select** button once. The backlight will remain on for 12 seconds.
- **To display the setpoint temperature**, press the **Up** or **Down** button once. The setpoint will be displayed for 5 seconds.
- **To modify the setpoint temperature**, press the **Up** or **Down** button until the desired value is displayed.
- **To enter or exit the programming mode**, press the **Select** button and hold for 3 seconds.



Quick reference to screen display

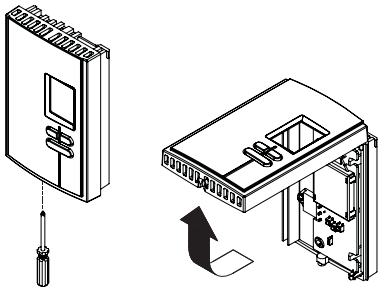


Removing the faceplate

TURN OFF POWER OF THE HEATING SYSTEM AT THE MAIN ELECTRICAL PANEL TO AVOID ELECTRIC SHOCK.

WARNING: *Installation must be carried out by a certified electrician and must comply with national and local electrical codes.*

Loosen the screw holding the faceplate to the base. The screw cannot be completely removed and remains captive on the base. Remove the faceplate from the base by pulling the bottom section.

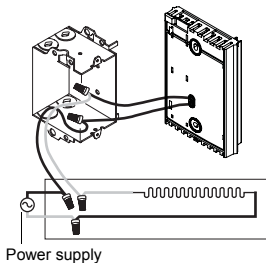


Wiring

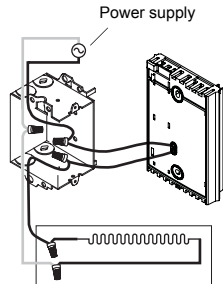
Connect either one of the thermostat wires to the heater wire and the other one to the power supply wire using solderless connectors for copper wires.

NOTE: Special CO/ALR solderless connectors must be used when connecting with aluminium conductors.

2-wire installation

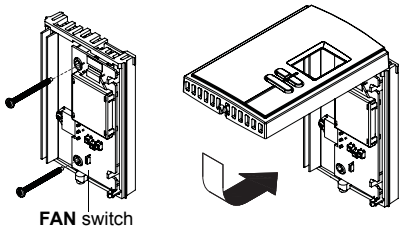


4-wire installation



Installing the thermostat

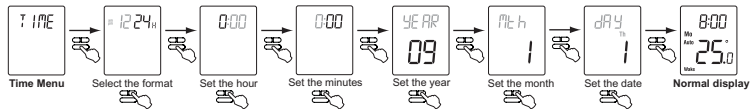
- Install the base onto an electrical box.
- Place the **FAN** switch on **Yes** only if the thermostat is connected to a fan-forced heater. Otherwise leave at **No**.
- If applicable, peel off the protective sticker from the thermostat's screen.
- Reinstall the faceplate on the base and secure it in place with the screw.
- Apply power to the thermostat at the main electrical panel.



Keep air vents at top and bottom of thermostat clean and unobstructed at all times.

Quick Start-up / Setting the clock and date

When you power the thermostat, the **Time** menu flashes on the screen. Set the thermostat's clock and date as follows:



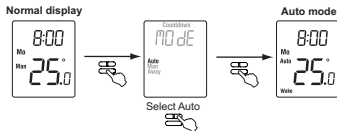
NOTE: At any time, you can access the **Time** menu by pressing the **Select** button for 3 seconds and then pressing the **Up** button once.

**Your new thermostat is already preprogrammed
and is now controlling the temperature!**

Automatic (Auto) mode

In Automatic mode, the thermostat follows the programmed schedule (see page 12).

To place the thermostat in Automatic (**Auto**) mode:



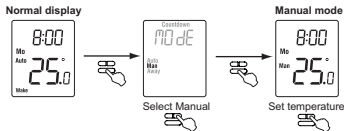
Temporary override

While the thermostat is in Automatic mode, you can press the **Up** or **Down** button to modify the temperature. The new temperature will be used until the end of the current period. **Auto** will flash during the override. You can cancel the override by pressing the **Select** button twice to return to Automatic mode.

Manual (Man) mode

Use the Manual mode if you wish to keep the thermostat at the same temperature indefinitely. In this mode, the thermostat will remain at this temperature until you press the **Up** or **Down** button to change it.

To place the thermostat in Manual (**Man**) mode:

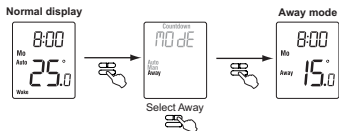


Away mode

The Away mode can be used when you are away for an undetermined length of time. For frost protection while saving energy, the Away temperature is set by default at 15°C (59°F) and cannot be modified by simply pressing the **Up** or **Down** button. To modify the Away temperature, see page 16.

NOTE: *The Away mode can also be used to prevent tampering of the setpoint temperature in the summer season when heating is not required.*

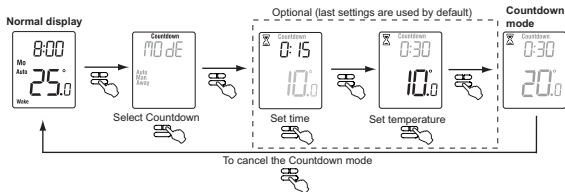
To place the thermostat in Away mode:



Countdown mode

Use the Countdown mode if you wish to keep the same temperature for a predetermined length of time. The choices of countdown times are: 15, 30, 45 min, 1, 2, 4, 8, 12, 18 hr and 1 to 14 days. At the end of the countdown, the thermostat automatically returns to the previous mode and uses the temperature programmed for that mode. At any time, you can cancel the Countdown mode by pressing the **Select** button.

To place the thermostat in Countdown mode:



NOTE:

At any time during the Countdown mode, you can adjust the countdown time and temperature by performing the steps shown inside the dotted rectangle.

Default schedule

When placed in Automatic mode (see page 8), the thermostat follows the programmed schedule. By default, the thermostat is programmed with the following schedule:

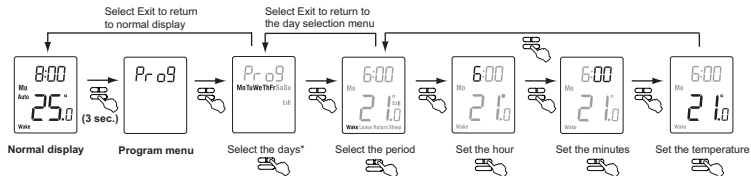
	Monday to Friday (Mo, Tu, We, Th & Fr)		Saturday and Sunday (Sa & Su)	
Period	Starting time	Temperature	Starting time	Temperature
Wake	6:00 (6:00 AM)	21.0°C (70°F)	6:00 (6:00 AM)	21.0°C (70°F)
Leave	8:00 (8:00 AM)	16.5°C (62°F)	-:--	-
Return	18:00 (6:00 PM)	21.0°C (70°F)	-:--	-
Sleep	22:00 (10:00 PM)	16.5°C (62°F)	22:00 (10:00 PM)	16.5°C (62°F)

The schedule consists of 4 periods per day, which represents a typical work day. However, you can program the thermostat to skip (cancel) the periods that do not apply to your situation. For example, **Leave** and **Return** periods are skipped for the weekend in the default schedule.

You can choose a different program every day; i.e., each period can have a different starting time and a different temperature every day.

Modifying the schedule

To modify the schedule, proceed as follows:



* The days can be selected collectively (Monday to Friday, Saturday & Sunday, or Monday to Sunday) or individually.

To skip a period: When the hour or the temperature of the period is flashing, press the **Up** and **Down** buttons at the same time. (Alternatively, set its hour between 23:00 [11:00 PM] and 0:00 [12:00 AM] or its temperature below 5°C [41°F].) Its time and temperature display will be replaced by dashes (-).

NOTE: If you do not press any button for one minute, the thermostat will automatically save any changes you have made and will return to its normal display.

Configuration parameters

Display	Parameter	Options	Default setting	To modify
FAN	Fan ¹	Yes / No	No	FAN switch (see page 6)
12:24 _H	Time format	12h / 24h	24h	Time menu (see page 7)
UNIT	Temperature unit	°C / °F	°C	Configuration menu (see page 16)
AWAY	Away temperature ²	5°C - 30°C (41°F - 86°F)	10°C (50°F)	
DST	Daylight Saving Time ³	On / Off	On	
ES	Early Start ⁴	On / Off	Off	

Configuration parameters (cont'd)

¹ Fan

Place at **Yes** if you have a fan-forced heater (to prevent premature burnout of the motor). Leave at **No** for better temperature regulation if you do not have a fan-forced heater.

² Away temperature

Set the temperature you wish to use when the thermostat is in Away mode (see page 10).

³ Daylight Saving Time

When the Daylight Saving Time function is enabled (**On**), the thermostat automatically switches to Daylight Saving Time on the second Sunday of March and to normal time on the first Sunday of November.

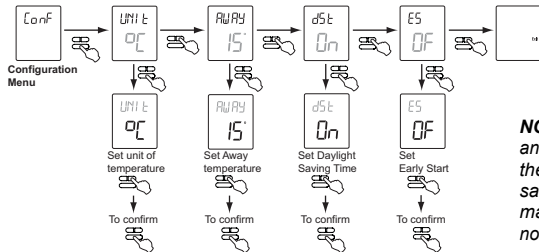
⁴ Early Start

Early Start is used in Automatic mode only. When Early Start is enabled (**On**), the thermostat determines when to start heating so the desired temperature is attained at the beginning of **Wake** and **Return** periods. When Early Start is disabled (**Off**), heating starts only at the beginning of **Wake** and **Return** periods; thus there is a delay before you reach the desired temperature.

Configuration procedure

The Configuration menu is shown below.

- 1 Press the **Select** button for 3 seconds to enter the main menu.
- 2 Press the **Up** button twice to enter the Configuration (**Conf**) menu.



NOTE: If you do not press any button for one minute, the thermostat will automatically save any changes you have made and will return to its normal display.

In case of difficulty

PROBLEM	SOLUTIONS
Thermostat is hot.	This is normal. Ensure that the heater capacity does not exceed the thermostat's maximum load.
Displayed temperature is wrong.	Remediate if any the following conditions exists: <ul style="list-style-type: none"> • The thermostat is exposed to air draft. • The thermostat is located near or above a heat source such as a light dimmer.
Display disappears and reappears after a few minutes.	The thermal protection device on the heater has temporarily opened. This can happen if the heater is obstructed by furniture or curtain and has overheated, or if the heater's thermal protection device is too sensitive.
TIME is flashing.	The thermostat was without power for more than 4 hours. Set its clock and date (Time menu).
Temperature does not change according to the programmed schedule.	<ul style="list-style-type: none"> • Ensure the thermostat is in Automatic mode. • Check the clock (Time menu) and the schedule (Prog menu). If the thermostat is configured for 12-hour format, ensure that AM or PM appears on the screen.

Customer assistance

If you have any questions about the product, contact us at:

705 Montrichard
Saint-Jean-sur-Richelieu, Quebec
J2X 5K8
Canada

Tel: 1-800-831-AUBE (2823)
Email: aube.service@honeywell.com



To reset the thermostat,
press both **Down** and
Select buttons and hold.

After 3 seconds, **RST** appears. After the next 5 seconds, when **RST** disappears, release the buttons. Except for the time and date, the thermostat has now returned to its default settings.

For more information on our products, go to
www.aubetech.com

Specifications

- **Supply:** 120/240 VAC, 60 Hz
- **Minimum load:** 0.83 A (resistive only)
200 W @ 240 VAC
100 W @ 120 VAC
- **Maximum load:** 10.4 A (resistive only)
2500 W @ 240 VAC
1250 W @ 120 VAC
- **Setpoint range:** 5°C to 30°C (41°F to 85°F)
- **Display range:** 0°C to 70°C (32°F to 99°F)
- **Setpoint/display resolution:** $\pm 0.5^{\circ}\text{C}$ ($\pm 1^{\circ}\text{F}$)
- **Operation:** 0°C to 50°C (32°F to 120°F)
- **Storage:** -20°C to 50°C (-4°F to 120°F)
- **Permanent memory:** You do not need to adjust the temperature settings or the thermostat's configurations following a power outage. However, you might need to set the thermostat's clock and date if the outage lasts more than 4 hours.



3-year limited warranty

Honeywell warrants this product, excluding battery, to be free from defects in the workmanship or materials, under normal use and service, for a period of three (3) years from the date of purchase by the consumer. If at any time during the warranty period the product is determined to be defective or malfunctions, Honeywell shall repair or replace it (at Honeywell's option).

If the product is defective,

- (i) return it, with a bill of sale or other dated proof of purchase, to the place from which you purchased it, or
- (ii) contact Honeywell. Honeywell will make the determination whether the product should be returned, or whether a replacement product can be sent to you.

This warranty does not cover removal or reinstallation costs. This warranty shall not apply if it is shown by Honeywell that the defect or malfunction was caused by damage which occurred while the product was in the possession of a consumer.

Honeywell's sole responsibility shall be to repair or replace the product within the terms stated above. HONEYWELL SHALL NOT BE LIABLE FOR ANY LOSS OR DAMAGE OF ANY KIND, INCLUDING ANY INCIDENTAL OR CONSEQUENTIAL DAMAGES RESULTING, DIRECTLY OR INDIRECTLY, FROM ANY BREACH OF ANY WARRANTY, EXPRESS OR IMPLIED, OR ANY OTHER FAILURE OF THIS PRODUCT. Some provinces, states or regions do not allow the exclusion or limitation of incidental or consequential damages, so this limitation may not apply to you.

THIS WARRANTY IS THE ONLY EXPRESS WARRANTY HONEYWELL MAKES ON THIS PRODUCT. THE DURATION OF ANY IMPLIED WARRANTIES, INCLUDING THE WARRANTIES OF MERCHANTABILITY AND FITNESS FOR A PARTICULAR PURPOSE, IS HEREBY LIMITED TO THE THREE-YEAR DURATION OF THIS WARRANTY. Some provinces, states or regions do not allow limitations on how long an implied warranty lasts, so the above limitation may not apply to you.

This warranty gives you specific legal rights, and you may have other rights which vary from one province, state or region to another.